

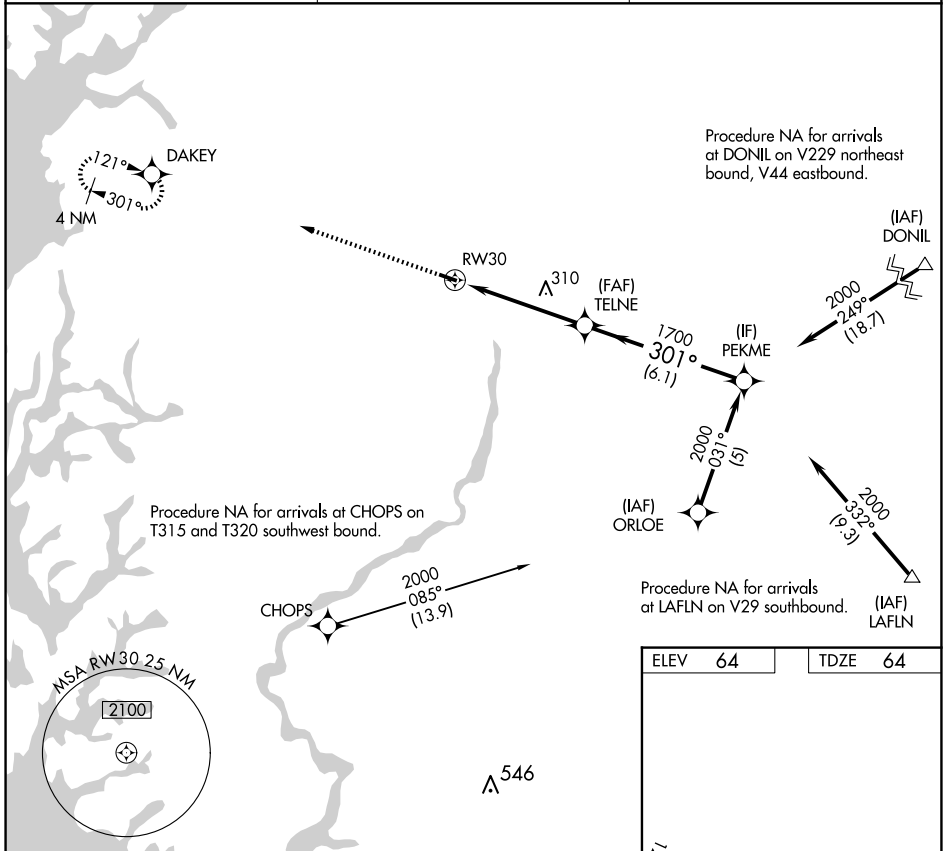
APP CRS	Rwy Idg	<b>3214</b>
<b>301°</b>	TDZE	<b>64</b>
	Apt Elev	<b>64</b>

# RNAV (GPS) RWY 30

GOODEN AIRPARK (RJD)

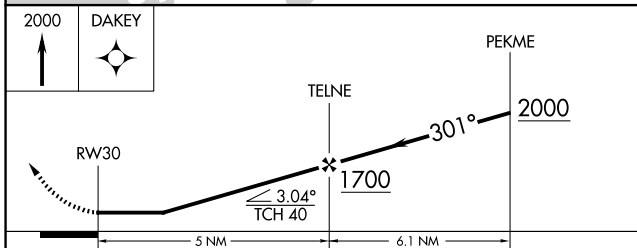
RNP APCH - GPS.	Procedure NA at night. Use Easton altimeter setting; when not received, procedure NA. Rwy 30 helicopter visibility reduction below 1 SM NA.	MISSED APPROACH: Climb to 2000 direct DAKEY and hold.
-----------------	---	---

ESN AWOS-3PT <b>124.475</b>	DOVER APP CON <b>132.425 257.875</b>	UNICOM <b>122.8 (CTAF)</b>
--------------------------------	---	-------------------------------

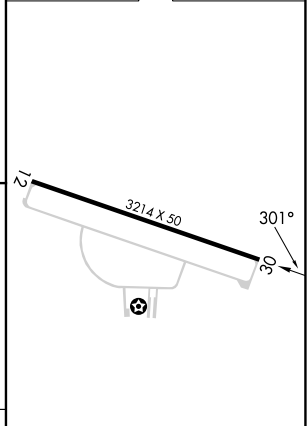


NE-3, 20 FEB 2025 to 20 MAR 2025

NE-3, 20 FEB 2025 to 20 MAR 2025



ELEV 64	TDZE 64
---------	---------



CATEGORY	A	B	C	D
LNAV MDA	660-1	596 (600-1)		NA
CIRCLING	660-1	596 (600-1)		NA

LIRL Rwy 12-30	<b>1</b>
REIL Rwy 12 and 30	<b>1</b>