

APP CRS	Rwy Idg	2932
283°	TDZE	939
	Apt Elev	939

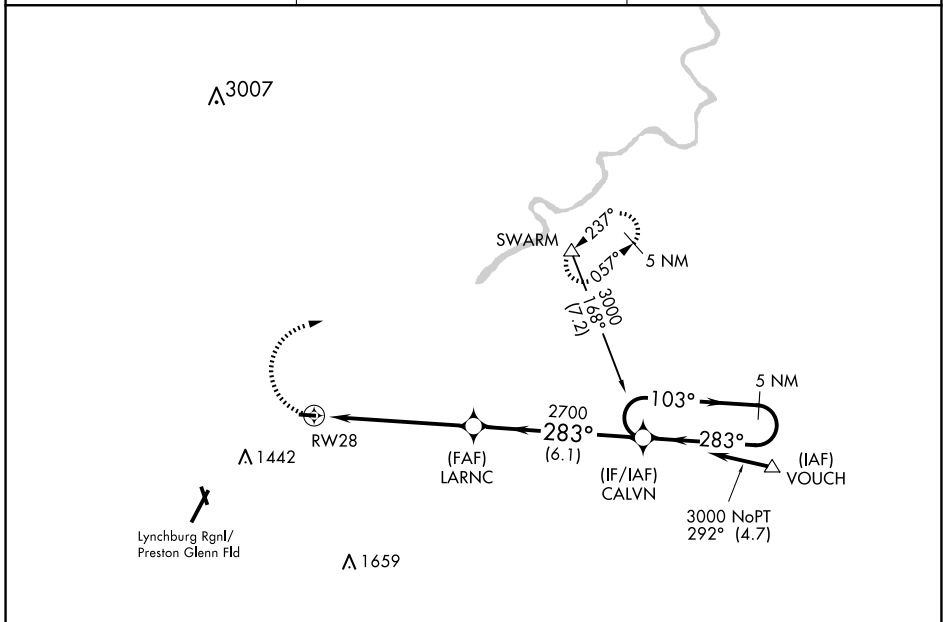
RNAV (GPS) RWY 28

FALWELL (W24)

⚠ NA DME/DME RNP-0.3 NA. Use Lynchburg Regional/Preston Glenn Fld altimeter setting, when not received use Farmville altimeter setting and increase all MDA 160 feet. Procedure NA at night.

MISSED APPROACH: Climbing right turn to 3500 direct SWARM and hold.

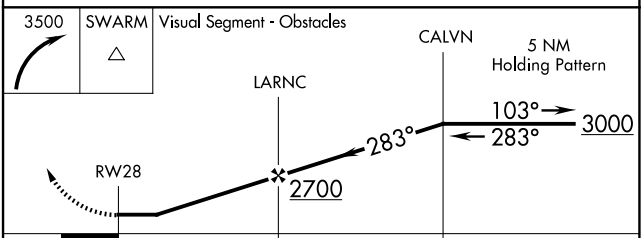
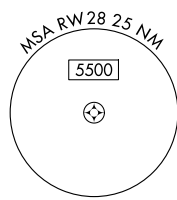
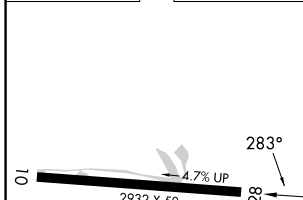
LYH ASOS 119.8	ROANOKE APP CON 135.0 254.325	UNICOM 123.0 (CTAF)
--------------------------	---	-------------------------------



NE-3, 20 FEB 2025 to 20 MAR 2025

NE-3, 20 FEB 2025 to 20 MAR 2025

ELEV 939	TDZE 939
----------	----------



CATEGORY	A	B	C	D
LNAV MDA	1460-1	521 (600-1)		NA