

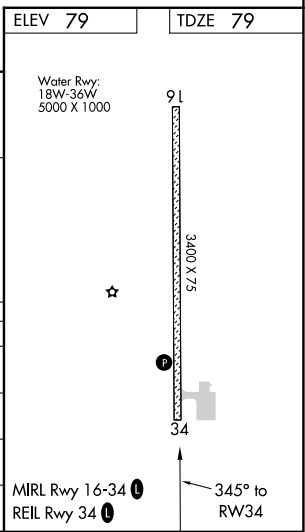
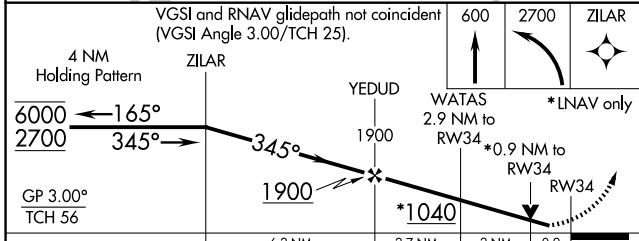
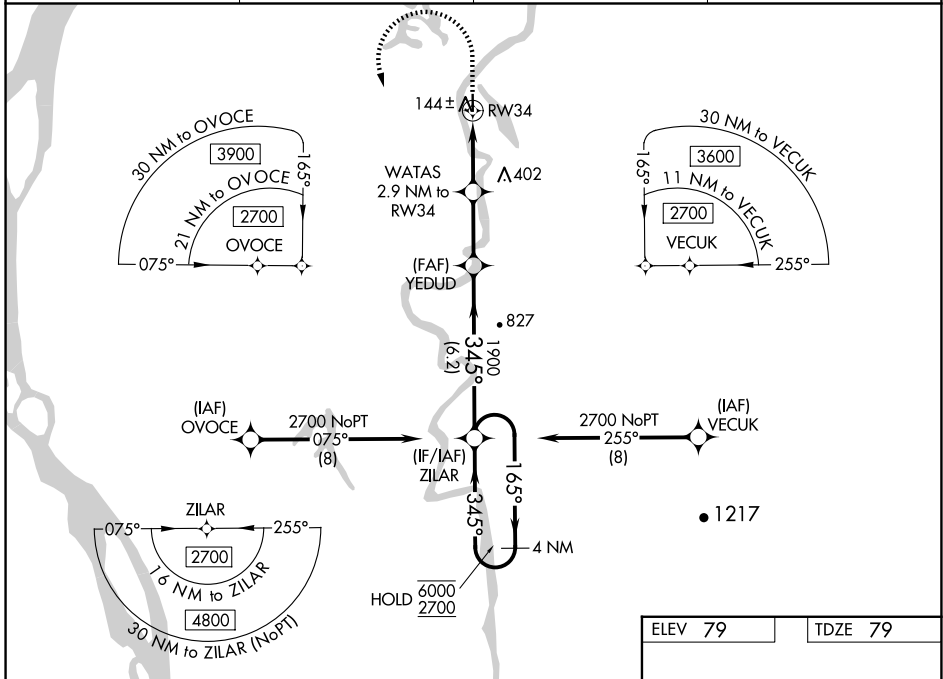
WAAS CH <b>72643</b> <b>W34A</b>	APP CRS <b>345°</b>	Rwy ldg TDZE <b>79</b> Apt Elev <b>79</b>	<b>3400</b>
--	------------------------	---	-------------

# RNAV (GPS) RWY 34

SHAGELUK (SHX) (PAHX)

RNP APCH.	MISSED APPROACH: Climb to 600 then climbing left turn to 2700 direct ZILAR and hold.
<p><b>▼</b> Rwy 34 helicopter visibility reduction below 3/4 SM NA. For uncompensated Baro-VNAV systems, LNAV/VNAV NA below -18°C or above 54°C. Circling NA for Cats C and D east of Rwy 16-34.</p>	

AWOS-3P <b>121.575</b>	ANCHORAGE CENTER <b>135.7 335.5</b>	KENAI RADIO <b>122.4</b>	UNICOM <b>122.8 (CTAF)</b>
---------------------------	--	-----------------------------	-------------------------------



CATEGORY	A	B	C	D
LPV DA		329-1	250 (300-1)	
LNAV/VNAV DA		329-1	250 (300-1)	
LNAV MDA		400-1	321 (400-1)	
<b>C</b> CIRCLING	460-1 381 (400-1)	540-1 461 (500-1)	540-1½ 461 (500-1½)	800-2¼ 721 (800-2¼)

AK, 20 FEB 2025 to 17 APR 2025

AK, 20 FEB 2025 to 17 APR 2025