

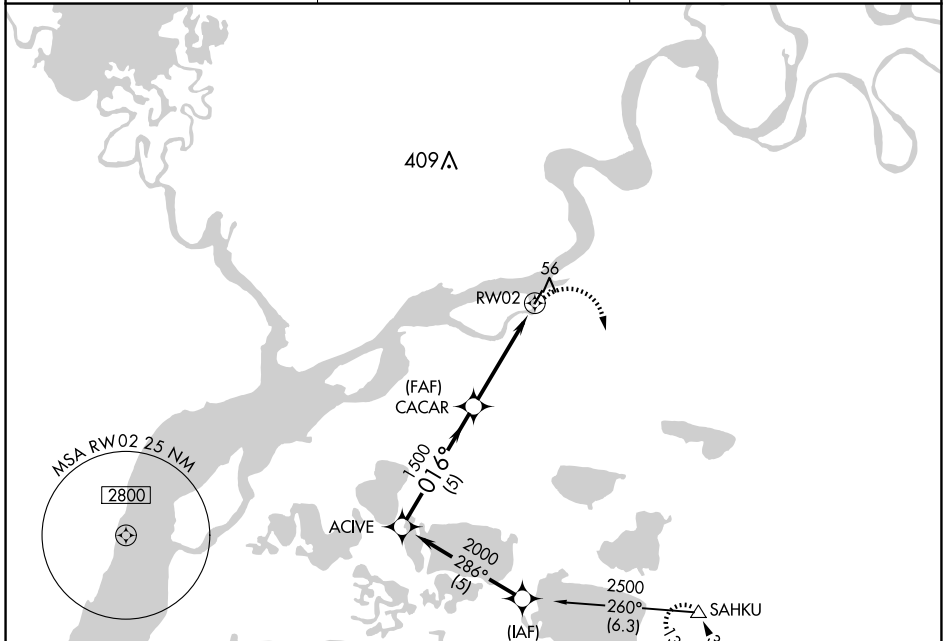
APP CRS <b>016°</b>	Rwy Idg TDZE Apt Elev	<b>3000</b> <b>11</b> <b>11</b>
------------------------	-----------------------------	---------------------------------------

# RNAV (GPS) RWY 2

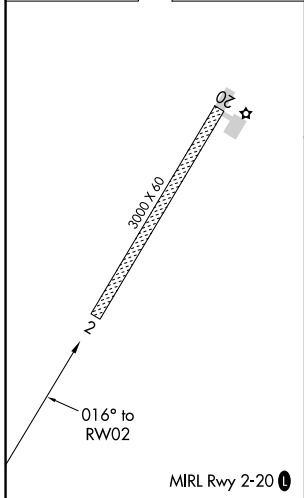
NAPASKIAK (PKA) (PAPK)

RNP APCH-GPS.	MISSED APPROACH: Climbing right turn to 2500 direct SAHKU WP and hold.
NA Use Bethel altimeter setting.	

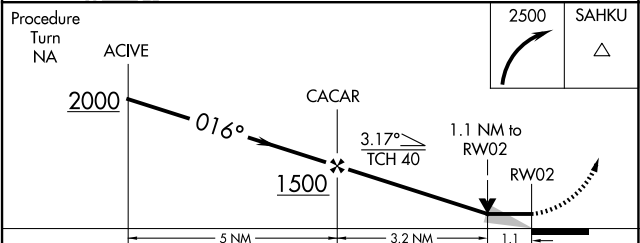
BET/PABE ASOS <b>135.45</b>	ANCHORAGE CENTER <b>125.2 372.0</b>	CTAF <b>122.9</b>
--------------------------------	--	----------------------



ELEV 11	TDZE 11
---------	---------



Procedure Turn NA	ACIVE	CACAR	2500 SAHKU
-------------------	-------	-------	------------



CATEGORY	A	B	C	D
LNAV MDA	420-1	409 (500-1)	NA	
CIRCLING	440-1 429 (500-1)	580-1 569 (600-1)	NA	

AK, 20 FEB 2025 to 17 APR 2025

AK, 20 FEB 2025 to 17 APR 2025