

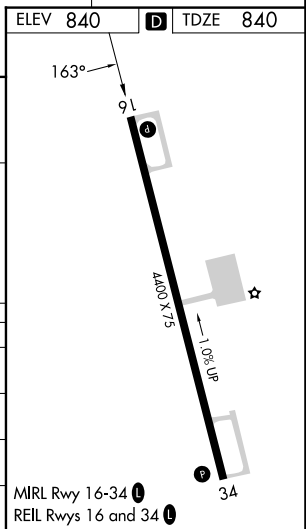
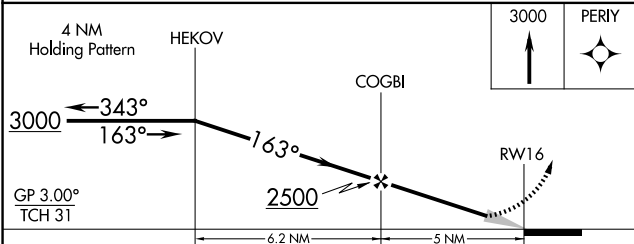
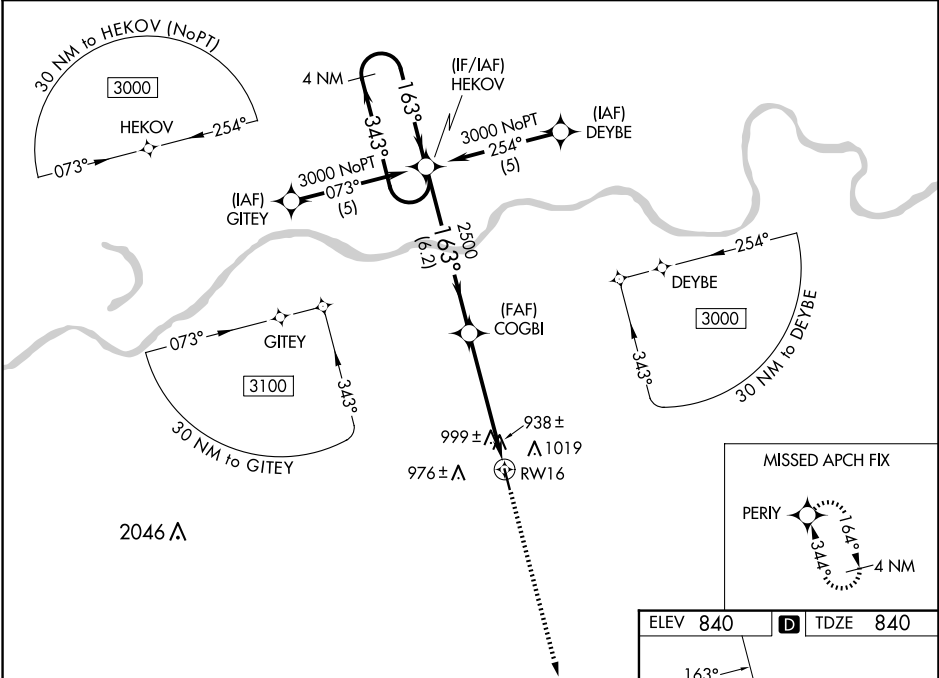
| | | | |
|---------------------------------|------------------------|-----------------------------|---|
| WAAS CH 86601 W16A | APP CRS 163° | Rwy Idg TDZE Apt Elev | 4400 840 840 |
|---------------------------------|------------------------|-----------------------------|---|

RNAV (GPS) RWY 16

HIGGINSVILLE INDUSTRIAL MUNI (HIG)

| | | |
|--|--|---|
| RNP APCH - GPS | | MISSED APPROACH: Climb to 3000 direct PERIY and hold. |
| <p>Baro-VNAV NA. Use Whiteman Air Force Base altimeter setting; when not received, use Kansas City/Lee's Summit Rgnl altimeter setting; increase LPV DA to 1293 feet and all visibilities ¼ SM; increase LNAV/VNAV DA to 1410 feet; increase all MDAs 60 feet, LNAV visibility Cat C ¼ SM and Circling visibility Cats C and D ¼ SM.</p> | | |

| | |
|---|---------------------------------|
| WHITEMAN APP CON ★ 127.45 284.0 | UNICOM 122.8 (CTAF) 0 |
|---|---------------------------------|



| CATEGORY | A | B | C | D |
|--------------|----------------------|----------------------|----------------------|---|
| LPV DA | 1247-1½ 407 (500-1½) | | | |
| LNAV/VNAV DA | 1364-2 524 (600-2) | | | |
| LNAV MDA | 1360-1 520 (600-1) | 1360-1½ 520 (600-1½) | 1360-1¾ 520 (600-1¾) | |
| CIRCLING | 1440-1 600 (600-1) | 1440-1½ 600 (600-1½) | 1460-2 620 (700-2) | |

NC-3, 20 FEB 2025 to 20 MAR 2025

NC-3, 20 FEB 2025 to 20 MAR 2025