

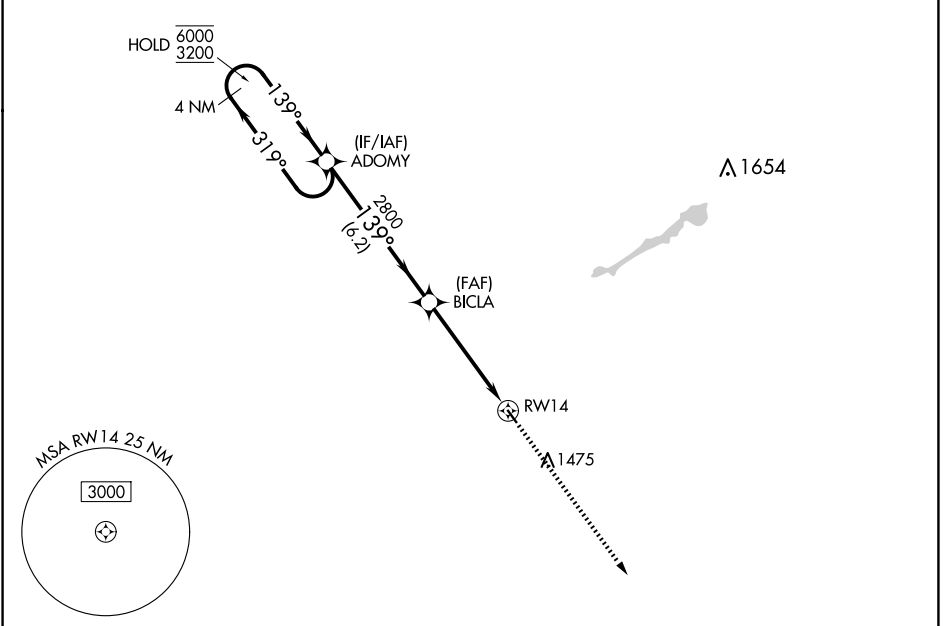
APP CRS 139°	Rwy Idg 3000
	TDZE 1137
	Apt Elev 1137

RNAV (GPS) RWY 14

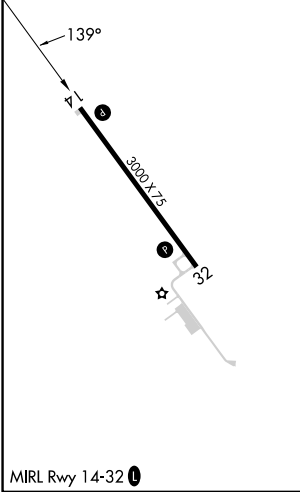
FERTILE MUNI (D14)

RNP APCH - GPS.	MISSED APPROACH: Climb to 3200 direct CALTU and hold.
NA Use Mahanometer altimeter setting.	

3N8 AWOS-3PT 121.125	GRAND FORKS APP CON* 118.1 318.1	UNICOM 122.8 (CTAF) 0
--------------------------------	--	---------------------------------



ELEV 1137	TDZE 1137
-----------	-----------



4 NM Holding Pattern 6000 ← 319° 3200 → 139°		ADOMY 2800 139°	BICLA 3.20° TCH 40	RWY 14 4.8 NM	3200 CALTU 4 NM
		6.2 NM			
VGSIs and descent angles not coincident (VGSIs Angle 3.20/TCH 27).					
CATEGORY	A	B	C	D	
LNAV MDA	1600-1	463 (500-1)	NA		
CIRCLING	1660-1 523 (600-1)	1760-1 623 (700-1)	NA		

NC-1, 20 FEB 2025 to 20 MAR 2025

NC-1, 20 FEB 2025 to 20 MAR 2025