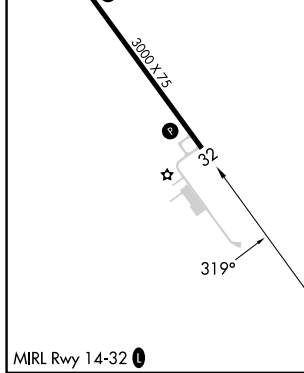
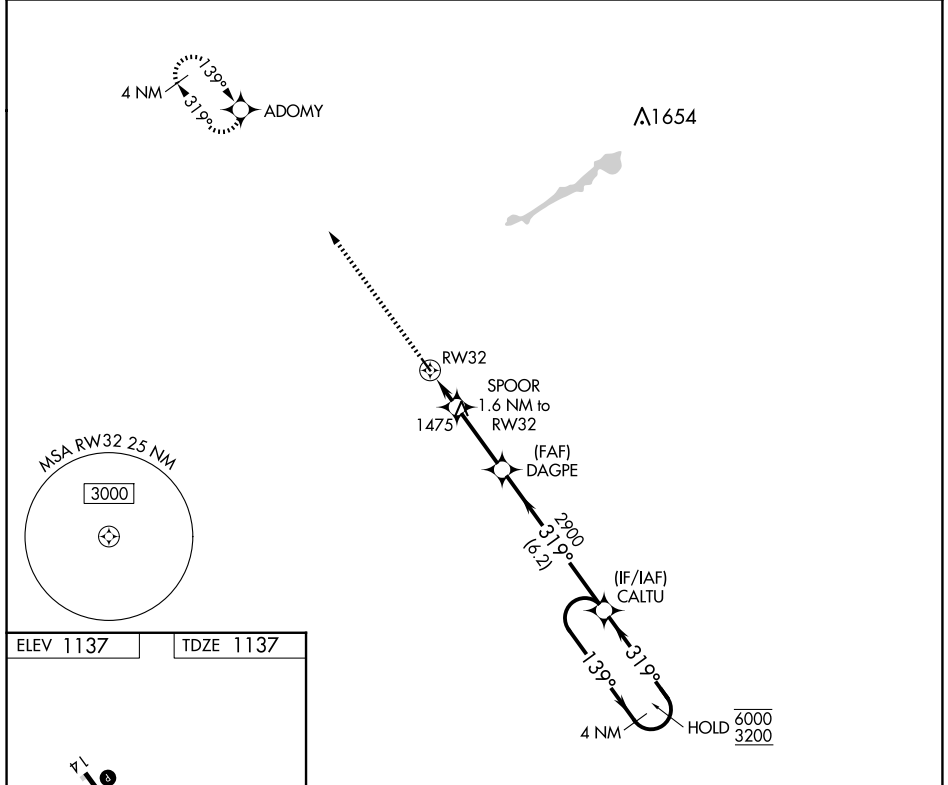


APP CRS	Rwy Idg	<b>3000</b>
<b>319°</b>	TDZE	<b>1137</b>
	Apt Elev	<b>1137</b>

# RNAV (GPS) RWY 32

FERTILE MUNI (D14)

RNP APCH - GPS.		MISSED APPROACH: Climb to 3200 direct ADOMY and hold.
▼ ▲NA	Use Mahnomens altimeter setting.	
3N8 AWOS-3PT <b>121.125</b>	GRAND FORKS APP CON ★ <b>118.1 318.1</b>	UNICOM <b>122.8 (CTAF) 0</b>



3200	ADOMY	VGSI and descent angles not coincident (VGSI Angle 3.70/TCH 31).		CALTU
↑	✧			4 NM Holding Pattern
		SPOOR 1.6 NM to RW32	DAGPE	6000 3200
		RW32	2900	
		1820		
		1.6 NM	2.8 NM	6.2 NM
CATEGORY	A	B	C	D
LNAV MDA	1700-1	563 (600-1)	NA	
CIRCLING	1700-1	1760-1	NA	
	563 (600-1)	623 (700-1)		

NC-1, 20 FEB 2025 to 20 MAR 2025

NC-1, 20 FEB 2025 to 20 MAR 2025