

WAAS CH <b>58014</b> <b>W01A</b>	APP CRS <b>020°</b>	Rwy Idg <b>3401</b> TDZE <b>162</b> Apt Elev <b>162</b>
--	------------------------	---

# RNAV (GPS) RWY 1

ELIM (ELI) (PFEL)

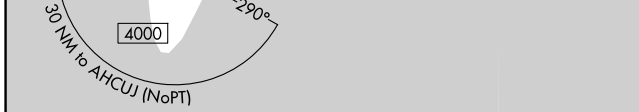
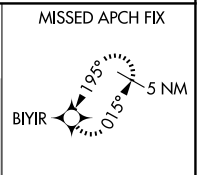
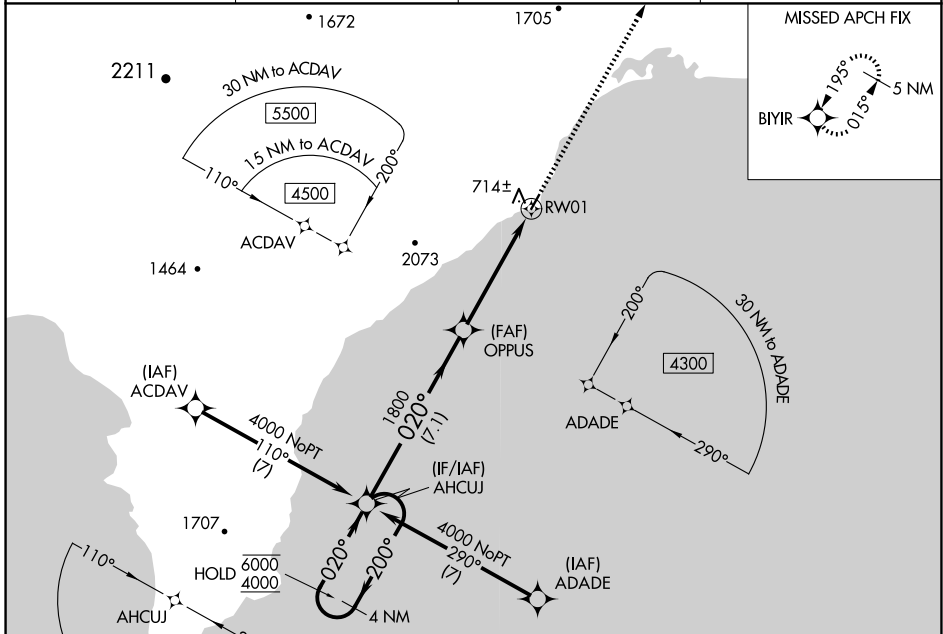
RNP APCH-GPS.

**⚠** Circling to Rwy 19 NA at night. For uncompensated Baro-VNAV systems, LNAV/VNAV NA below -18°C or above 54°C.

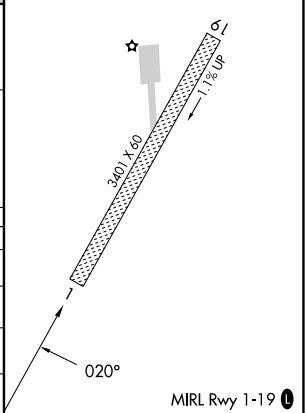
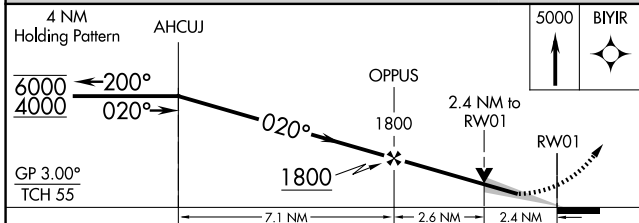
**⚠** -29°C

MISSED APPROACH: Climb to 5000 direct BIYIR and hold, continue climb-in hold to 5000.

AWOS-3P <b>121.425</b>	ANCHORAGE CENTER <b>133.3 290.4</b>	NOME RADIO <b>122.15</b>	CTAF <b>122.8</b>
---------------------------	--	-----------------------------	----------------------



ELEV 162	TDZE 162
----------	----------



CATEGORY	A	B	C	D
LPV DA	668-1 $\frac{3}{8}$		506 (600-1 $\frac{3}{8}$ )	
LNAV/VNAV DA	895-2		733 (800-2)	
LNAV MDA	980-1 818 (900-1)	980-1 $\frac{1}{4}$ 818 (900-1 $\frac{1}{4}$ )	980-2 $\frac{1}{2}$	818 (900-2 $\frac{1}{2}$ )
<b>C</b> CIRCLING	980-1 $\frac{1}{4}$ 818 (900-1 $\frac{1}{4}$ )	1040-1 $\frac{1}{4}$ 878 (900-1 $\frac{1}{4}$ )	1040-2 $\frac{1}{2}$ 878 (900-2 $\frac{1}{2}$ )	1040-2 $\frac{3}{4}$ 878 (900-2 $\frac{3}{4}$ )

AK, 20 FEB 2025 to 17 APR 2025

AK, 20 FEB 2025 to 17 APR 2025