

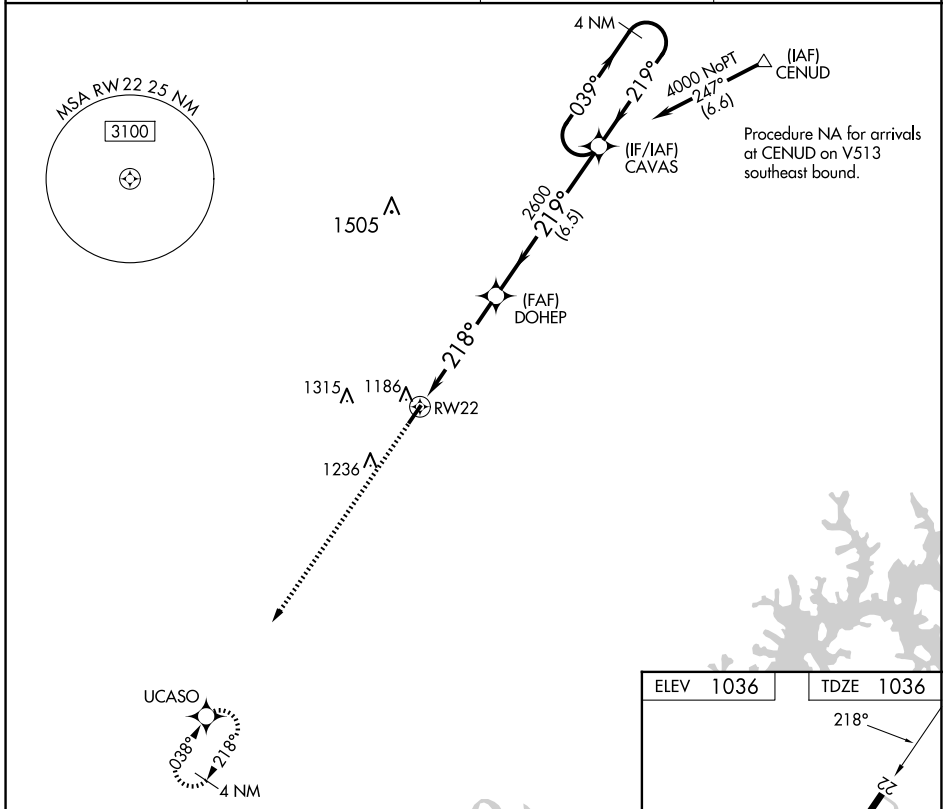
WAAS CH 58031 W22A	APP CRS 218°	Rwy Idg TDZE Apt Elev	4000 1036 1036
--	------------------------	-----------------------------	---

RNAV (GPS) RWY 22

TOMPKINSVILLE/MONROE COUNTY (T'ZV)

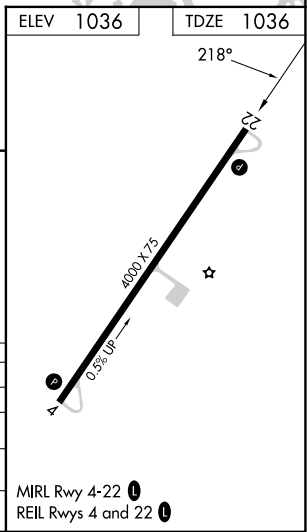
NA Baro-VNAV NA. DME/DME RNP-0.3 NA. Helicopter visibility reduction below ¼ SM NA. Use Glasgow altimeter setting. Night landing: Rwy 4 NA. MISSED APPROACH: Climb to 4000 direct UCASO and hold.

AWOS-AV 124.175	GLW AWOS-3 118.525	MEMPHIS CENTER 132.9 290.3	UNICOM 123.05 (CTAF) 0
---------------------------	------------------------------	--------------------------------------	----------------------------------



SE-1, 20 FEB 2025 to 20 MAR 2025

SE-1, 20 FEB 2025 to 20 MAR 2025



4000	UCASO	*LNAV only.		CAVAS	4 NM Holding Pattern
*1.7 NM to RW22		DOHEP 2600	2600	039°	4000
RW22		218°	219°	219°	GP 3.00° TCH 30
1.7		3.1 NM		6.5 NM	
CATEGORY	A	B	C	D	
LPV DA	1385-1¼		349 (400-1¼)	NA	
LNAV/VNAV DA	1593-2		557 (600-2)	NA	
LNAV MDA	1620-1	584 (600-1)		1620-1¾ 584 (600-1¾)	NA
C CIRCLING	1640-1 604 (700-1)	1800-1 764 (800-1)	1840-2¼ 804 (900-2¼)		NA

MIRL Rwy 4-22 0
REIL Rwy 4 and 22 0