

(LLADN1.LLADN) 17341

# LLADN ONE DEPARTURE (RNAV)

AL-10288 (FAA)

HULETT MUNI (W43)  
HULETT, WYOMING

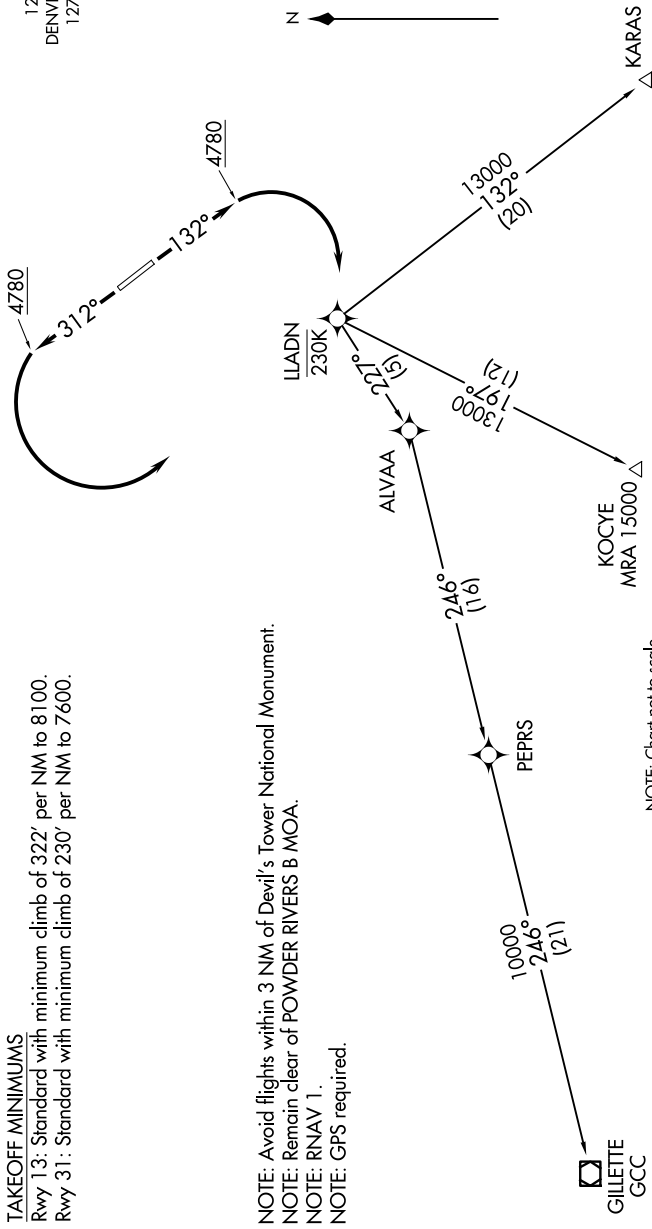
NW-1, 20 FEB 2025 to 20 MAR 2025

### TAKEOFF MINIMUMS

Rwy 13: Standard with minimum climb of 322' per NM to 8100.  
Rwy 31: Standard with minimum climb of 230' per NM to 7600.

UNICOM  
122.8 (CTAF)  
DENVER CENTER  
127.95 338.2

NOTE: Avoid flights within 3 NM of Devil's Tower National Monument.  
NOTE: Remain clear of POWDER RIVERS B MOA.  
NOTE: RNAV 1.  
NOTE: GPS required.



NOTE: Chart not to scale.

### DEPARTURE ROUTE DESCRIPTION

**TAKEOFF RUNWAY 13:** Climb heading 132° to 4780, then right turn direct LLADN, cross LLADN at/below 230K. Thence . . . .  
**TAKEOFF RUNWAY 31:** Climb heading 312° to 4780, then left turn direct LLADN, cross LLADN at/below 230K. Thence . . . .  
. . . . Expect further clearance to filed altitude 10 minutes after departure.  
**LOST COMMUNICATIONS:** Alternate frequency 135.6 / 363.025.

- GILLETTE TRANSITION (LLADN1.GCC)
- KARAS TRANSITION (LLADN1.KARAS)
- KOCYE TRANSITION (LLADN1.KOCYE)

# LLADN ONE DEPARTURE (RNAV)

(LLADN1.LLADN) 03APR14

HULETT, WYOMING  
HULETT MUNI (W43)

NW-1, 20 FEB 2025 to 20 MAR 2025