

APP CRS	Rwy Idg	2962
144°	TDZE	839
	Apt Elev	839

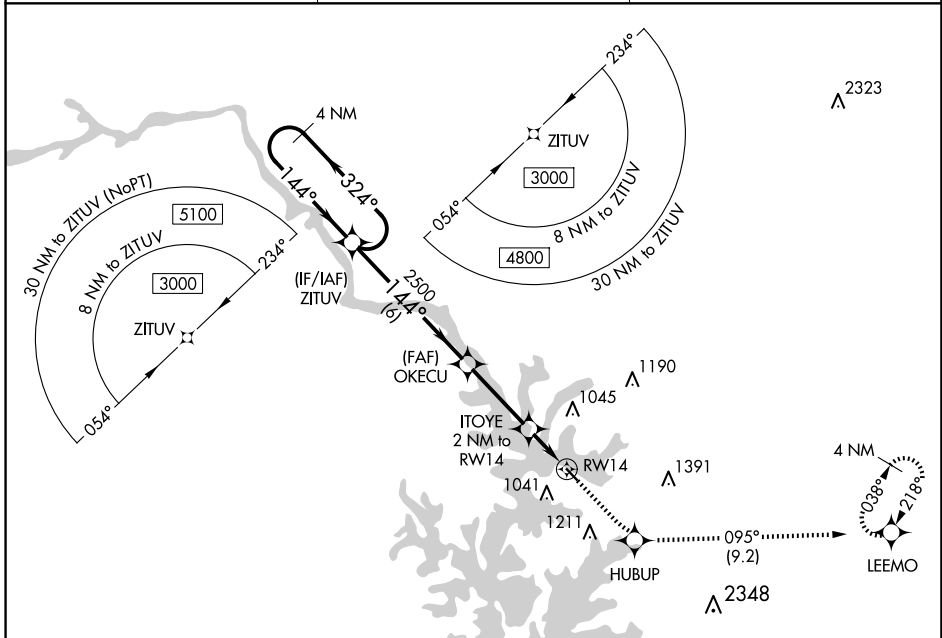
RNAV (GPS) RWY 14

LAKE NORMAN AIRPARK (14A)

NA Procedure NA at night. DME/DME RNP-0.3 NA. Use Statesville altimeter setting; when not received, use Charlotte altimeter setting and increase all MDA 40 feet. Rwy 14, 32 helicopter visibility reduction below 1 SM NA.

MISSED APPROACH: Climb to 4000 direct HUBUP and on track 095° to LEEMO and hold, continue climb-in-hold to 4000.

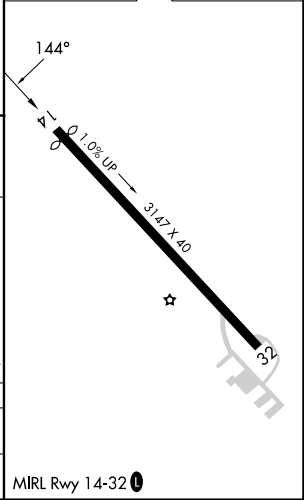
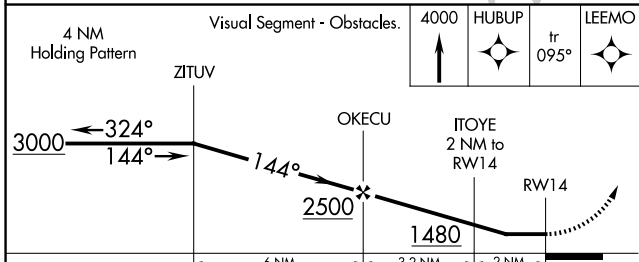
SVH AWOS-3 119.225	CHARLOTTE APP CON 134.75 257.2	UNICOM 122.8 (CTAF)
------------------------------	------------------------------------------	-------------------------------



SE-2, 20 FEB 2025 to 20 MAR 2025

SE-2, 20 FEB 2025 to 20 MAR 2025

ELEV	839	TDZE	839
------	-----	------	-----



CATEGORY	A	B	C	D
LNVA MDA	1360-1	521 (600-1)	NA	
CIRCLING	1440-1 601 (700-1)	1500-1 661 (700-1)	NA	