

WAAS CH <b>72632</b> <b>W31A</b>	APP CRS <b>306°</b>	Rwy Idg TDZE Apt Elev	<b>5500</b> <b>1126</b> <b>1126</b>
--	------------------------	-----------------------------	---

# RNAV (GPS) RWY 31

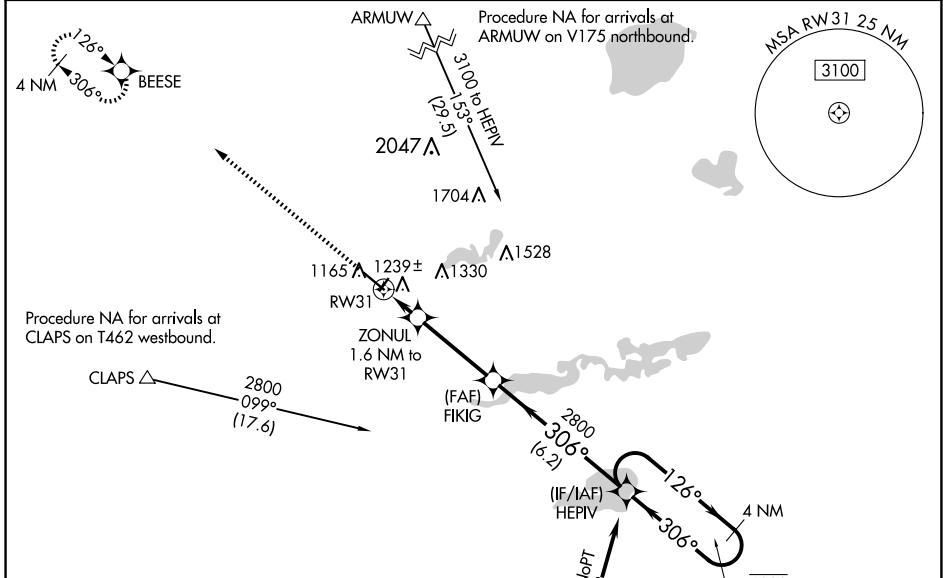
WILLMAR MUNI/JOHN L RICE FLD (BDH)

RNP APCH - GPS.

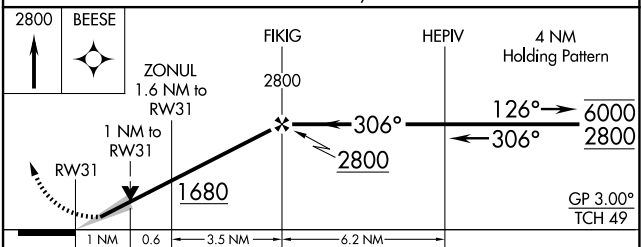
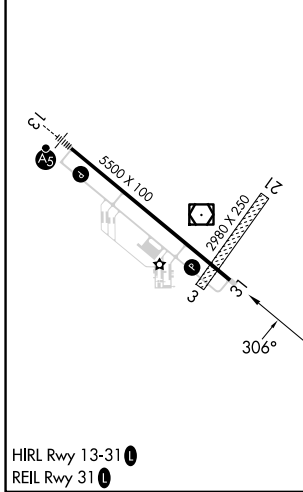
**⚠** For uncompensated Baro-VNAV systems, LNAV/VNAV NA below -17°C or above 54°C. When local altimeter setting not received, use Olivia altimeter setting; increase LPV DA to 1381 feet; increase LNAV/VNAV DA to 1475 feet and all visibilities 1/8 SM; increase all MDAs 60 feet and LNAV visibility Cat C and D 1/4 SM. Baro-VNAV and VDP NA when using Olivia Rgnl altimeter setting.

MISSED APPROACH: Climb to 2800 direct BEESE and hold.

AWOS-3PT <b>118.75</b>	MINNEAPOLIS CENTER <b>125.5 323.1</b>	UNICOM <b>122.8 (CTAF)</b>
---------------------------	--	-------------------------------



ELEV 1126	TDZE 1126
-----------	-----------



CATEGORY	A	B	C	D
LPV DA		1326-3/4	200 (200-3/4)	
LNAV/VNAV DA		1420-3/4	294 (300-3/4)	
LNAV MDA		1500-1	374 (400-1)	

NC-1, 20 FEB 2025 to 20 MAR 2025

NC-1, 20 FEB 2025 to 20 MAR 2025