

LOC/DME I-BYL 108.3 Chan 20	APP CRS 200°	Rwy Idg 5499 TDZE 1178 Apt Elev 1178
---	------------------------	---

LOC RWY 20

WILLIAMSBURG-WHITLEY COUNTY (BYL)

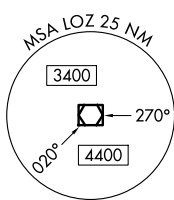
DME required.

⚠ Rwy 20 helicopter visibility reduction below $\frac{3}{4}$ SM NA. VDP NA when using London altimeter setting. When local altimeter setting not received, use London altimeter setting and increase all MDAs 60 feet and S-20 Cats C/D visibility $\frac{1}{2}$ SM.

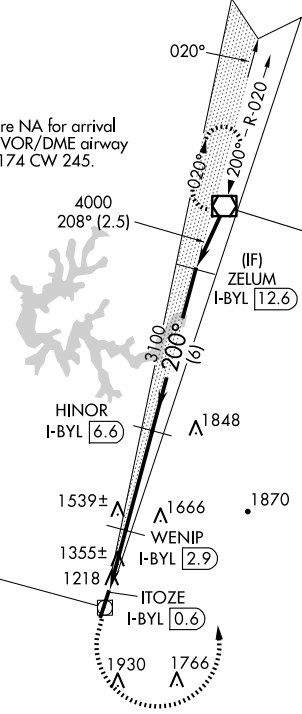
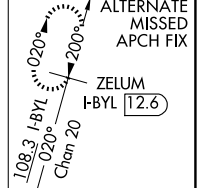
⚠ -17°C

MISSED APPROACH: Climb to 1800 then climbing left turn to 4000 direct LOZ VOR/DME and hold.

AWOS-3 119.575	INDIANAPOLIS CENTER 124.625 371.925	UNICOM 122.7 (CTAF)
--------------------------	---	-------------------------------

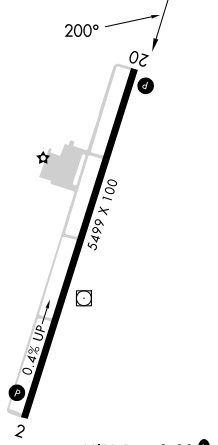


Procedure NA for arrival on LOZ VOR/DME airway radials 174 CW 245.



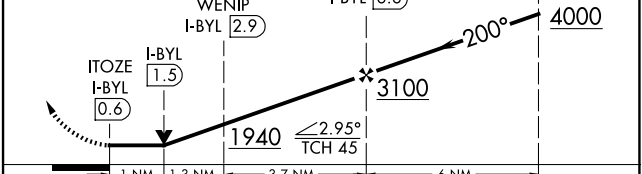
LOCALIZER **108.3**
I-BYL
Chan **20**
LOC offset 2.88°

ELEV 1178	TDZE 1178
------------------	------------------



MRL Rwy 2-20
REIL Rwy 2 and 20

1800 4000 LOZ VGSI and descent angles not coincident (VGSI Angle 3.17/TCH 30).



CATEGORY	A	B	C	D
S-20	1740-1	562 (600-1)	1740- $1\frac{5}{8}$	562 (600-1 $\frac{1}{2}$)
CIRCLING	1760-1 582 (600-1)	1860-1 682 (700-1)	2240-3 1062 (1100-3)	2260-3 1082 (1100-3)

SE-1, 20 FEB 2025 to 20 MAR 2025

SE-1, 20 FEB 2025 to 20 MAR 2025