

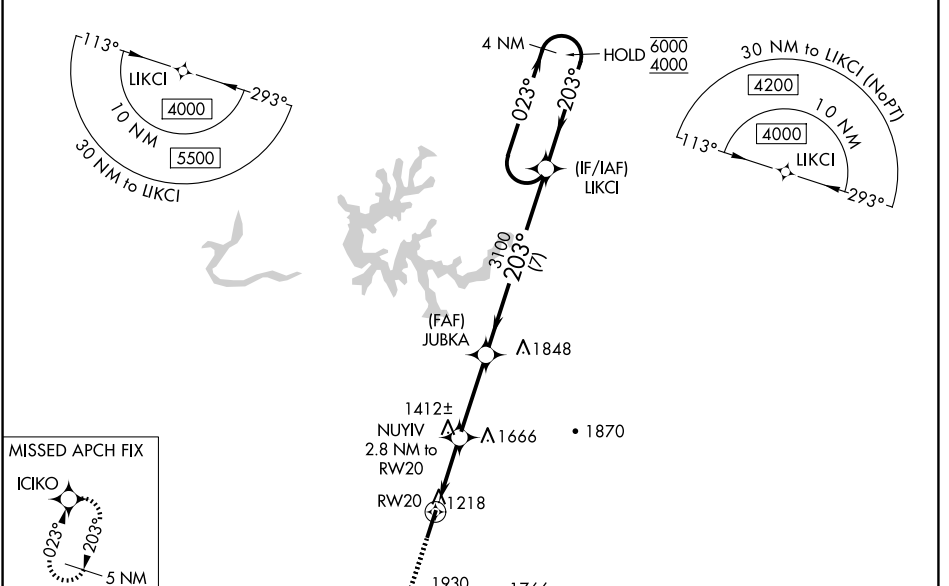
WAAS CH 70403 W20A	APP CRS 203°	Rwy Idg TDZE Apt Elev	5499 1178 1178
--	------------------------	-----------------------------	---

RNAV (GPS) RWY 20

WILLIAMSBURG-WHITLEY COUNTY (BYL)

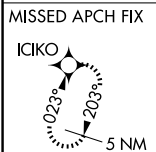
RNP APCH.	MISSED APPROACH: Climb to 4900 direct ICIKO and hold, continue climb-in-hold 4900.
<p>▼</p> <p>▲ Rwy 20 helicopter visibility reduction below 3/4 SM NA.</p> <p>⊗ -17°C For uncompensated Baro-VNAV systems, LNAV/VNAV NA below -17°C or above 54°C.</p>	

AWOS-3 119.575	INDIANAPOLIS CENTER 124.625 371.925	UNICOM 122.7 (CTAF) 0
--------------------------	---	---------------------------------

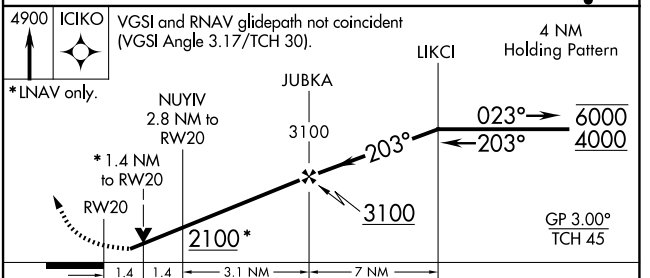
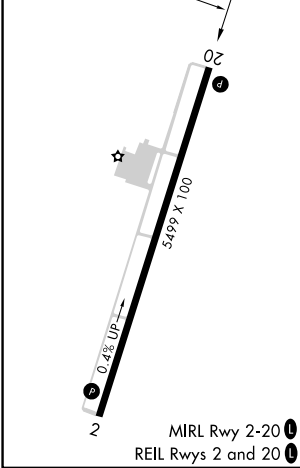


SE-1, 20 FEB 2025 to 20 MAR 2025

SE-1, 20 FEB 2025 to 20 MAR 2025



ELEV 1178	TDZE 1178
-----------	-----------



CATEGORY	A	B	C	D
LPV DA		1651-1 3/8	473 (500-1 3/8)	
LNAV/VNAV DA		1670-1 1/8	492 (500-1 3/8)	
LNAV MDA	1680-1	502 (600-1)	1680-1 3/8	502 (600-1 3/8)
<input checked="" type="checkbox"/> CIRCLING	1760-1 582 (600-1)	1860-1 682 (700-1)	2240-3 1062 (1100-3)	2260-3 1082 (1100-3)