

WAAS CH <b>97729</b> <b>W12A</b>	APP CRS <b>122°</b>	Rwy Idg TDZE Apt Elev	<b>3900</b> <b>2252</b> <b>2264</b>
--	------------------------	-----------------------------	---

# RNAV (GPS) RWY 12

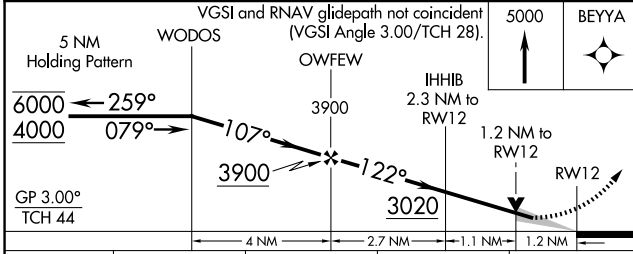
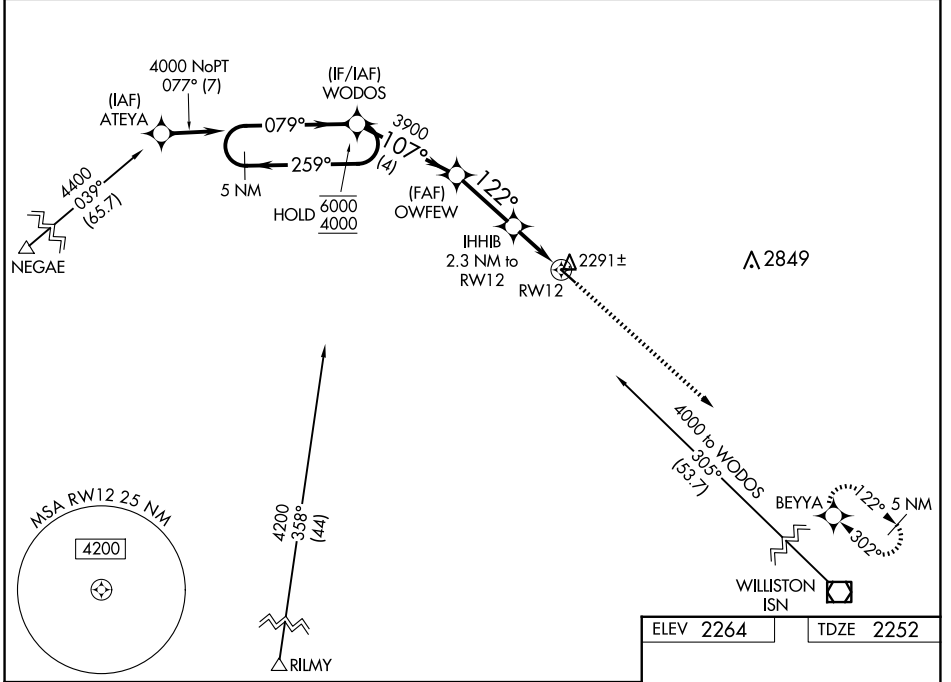
SHER-WOOD (PWD)

RNP APCH-GPS.

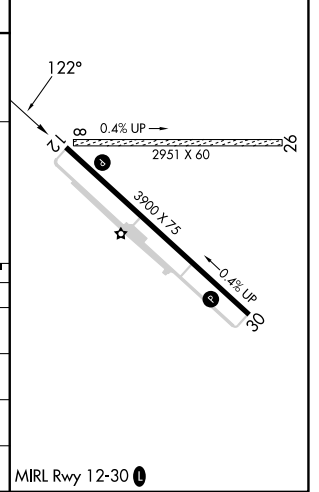
**⚠** Circling Rwy 8, 26 NA at night. For uncompensated Baro-VNAV systems, LNAV/VNAV NA below -19°C or above 54°C. When local altimeter setting not received, use Williston altimeter setting.

MISSED APPROACH: Climb to 5000 direct BEYYA and hold.

AWOS-3PT <b>135.025</b>	SALT LAKE CENTER <b>126.85 305.2</b>	UNICOM <b>122.8 (CTAF) 0</b>
----------------------------	---	---------------------------------



ELEV 2264	TDZE 2252
-----------	-----------



CATEGORY	A	B	C	D
LPV DA	2567-7/8		315 (400-7/8)	
LNAV/VNAV DA	2617-1		365 (400-1)	
LNAV MDA	2660-1	408 (400-1)	2660-1 1/8	408 (400-1 1/8)
<b>C</b> CIRCLING	2780-1	516 (600-1)	2880-1 3/4 616 (700-1 3/4)	3100-2 3/4 836 (900-2 3/4)

NW-1, 20 FEB 2025 to 20 MAR 2025

NW-1, 20 FEB 2025 to 20 MAR 2025