

| | | | |
|--|------------------------|-----------------------------|---|
| WAAS CH 50529 W30A | APP CRS 302° | Rwy Idg TDZE Apt Elev | 3900 2247 2264 |
|--|------------------------|-----------------------------|---|

RNAV (GPS) RWY 30

SHER-WOOD (PWD)

RNP APCH-GPS.

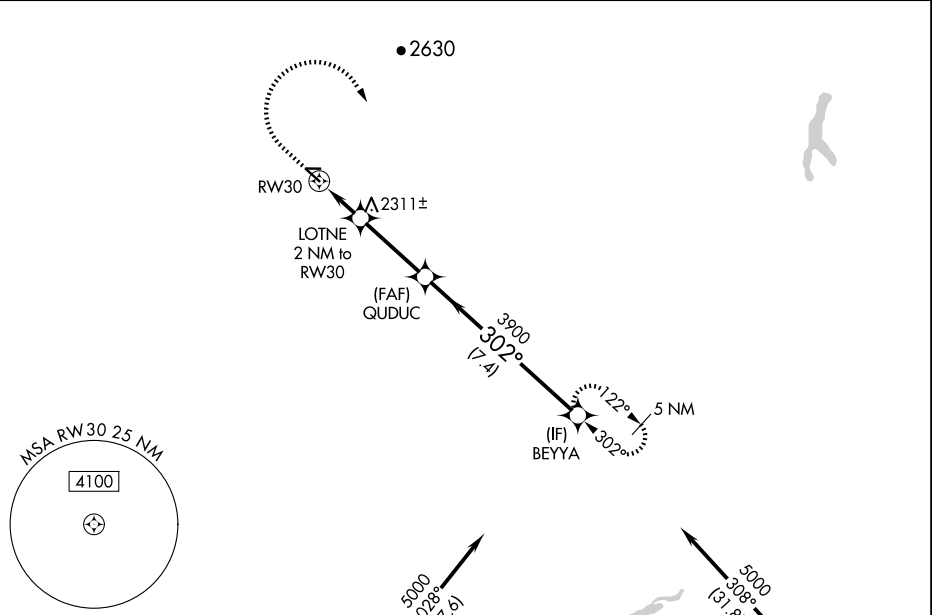
⚠ Circling Rwy 8, 26 NA at night. For uncompensated Baro-VNAV systems, LNAV/VNAV NA below -19°C or above 54°C. When local altimeter setting not received, use Williston altimeter setting.

MISSED APPROACH: Climb to 2900 then climbing right turn to 5000 direct BEYYA and hold.

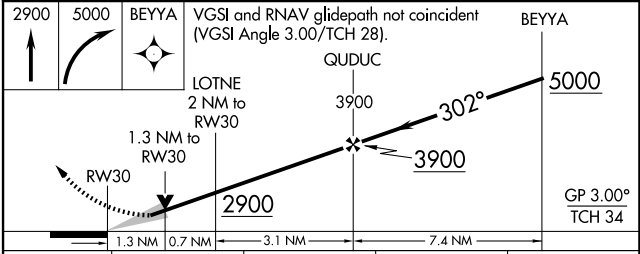
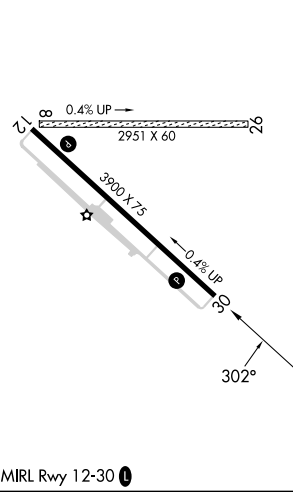
AWOS-3PT
135.025

SALT LAKE CENTER
126.85 305.2

UNICOM
122.8 (CTAF) 0



ELEV 2264 TDZE 2247



| CATEGORY | A | B | C | D |
|-------------------|--------|-------------|-------------------------------|-------------------------------|
| LPV DA | | 2562-3/4 | 315 (300-3/4) | |
| LNAV/VNAV DA | | 2612-1 | 365 (400-1) | |
| LNAV MDA | 2680-1 | 433 (500-1) | 2680-1 1/4 | 433 (500-1 1/4) |
| C CIRCLING | 2780-1 | 516 (600-1) | 2880-1 3/4 616 (700-1 3/4) | 3100-2 3/4 836 (900-2 3/4) |

NW-1, 20 FEB 2025 to 20 MAR 2025

NW-1, 20 FEB 2025 to 20 MAR 2025