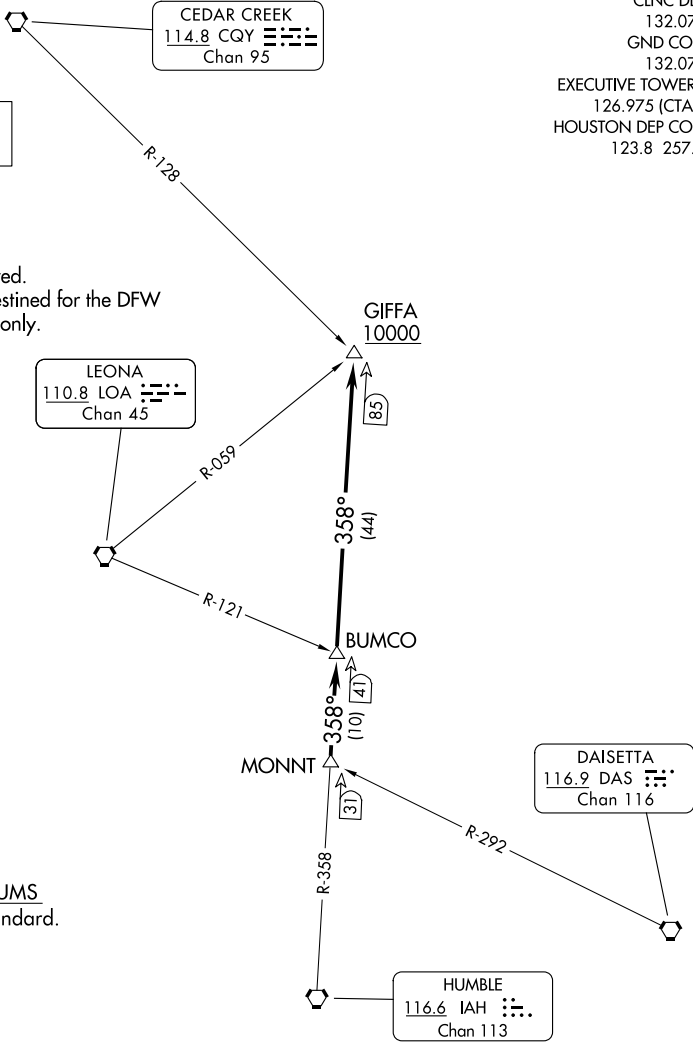


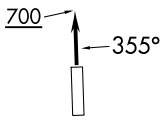
ATIS  
 119.525  
 CLNC DEL  
 132.075  
 GND CON  
 132.075  
 EXECUTIVE TOWER★  
 126.975 (CTAF)  
 HOUSTON DEP CON  
 123.8 257.7

**TOP ALTITUDE:  
ASSIGNED BY ATC**

NOTE: RADAR required.  
 NOTE: For aircraft destined for the DFW  
 terminal area only.



TAKEOFF MINIMUMS  
 Rwys 18, 36: Standard.



(CONTINUED ON FOLLOWING PAGE)

NOTE: Chart not to scale.

SC-5, 20 FEB 2025 to 20 MAR 2025

SC-5, 20 FEB 2025 to 20 MAR 2025



DEPARTURE ROUTE DESCRIPTION

TAKEOFF RUNWAY 18: When entering controlled airspace, climb on assigned heading for RADAR vectors to MONNT INT. Maintain ATC assigned altitude. Expect filed altitude 10 minutes after departure, thence . . .

TAKEOFF RUNWAY 36: Climb on heading 355° to 700 before turning. When entering controlled airspace, climb on assigned heading for RADAR vectors to MONNT INT. Maintain ATC assigned altitude. Expect filed altitude 10 minutes after departure, thence . . . .

. . . . on IAH R-358 to cross GIFFA INT at or above 10000.

SC-5, 20 FEB 2025 to 20 MAR 2025

SC-5, 20 FEB 2025 to 20 MAR 2025