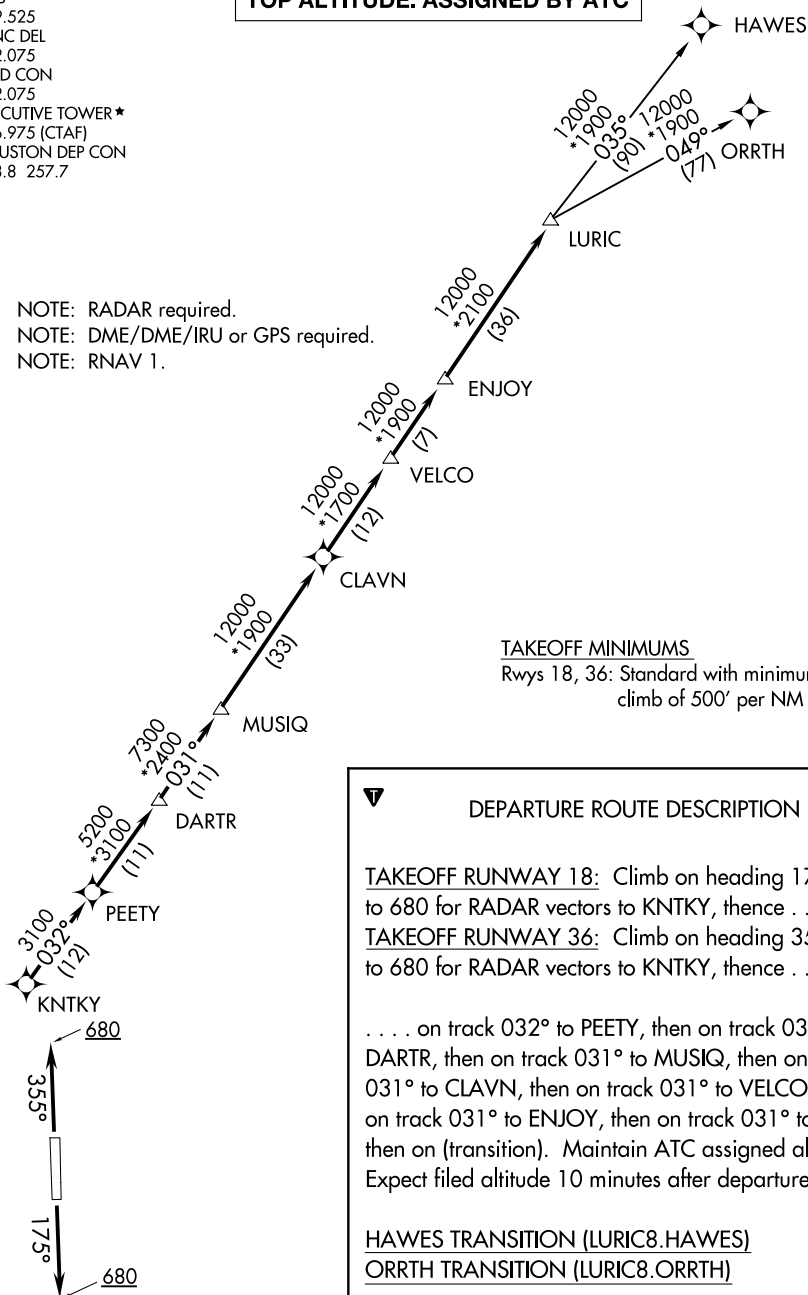


# LURIC EIGHT DEPARTURE (RNAV)

ATIS  
 119.525  
 CLNC DEL  
 132.075  
 GND CON  
 132.075  
 EXECUTIVE TOWER ★  
 126.975 (CTAF)  
 HOUSTON DEP CON  
 123.8 257.7

**TOP ALTITUDE: ASSIGNED BY ATC**

NOTE: RADAR required.  
 NOTE: DME/DME/IRU or GPS required.  
 NOTE: RNAV 1.



### TAKEOFF MINIMUMS

Rwys 18, 36: Standard with minimum climb of 500' per NM to 680.

### DEPARTURE ROUTE DESCRIPTION

**TAKEOFF RUNWAY 18:** Climb on heading 175° to 680 for RADAR vectors to KNTKY, thence . . . .  
**TAKEOFF RUNWAY 36:** Climb on heading 355° to 680 for RADAR vectors to KNTKY, thence . . . .  
 . . . . on track 032° to PEETY, then on track 032° to DARTR, then on track 031° to MUSIQ, then on track 031° to CLAVN, then on track 031° to VELCO, then on track 031° to ENJOY, then on track 031° to LURIC, then on (transition). Maintain ATC assigned altitude. Expect filed altitude 10 minutes after departure.

HAWES TRANSITION (LURIC8.HAWES)  
ORRTH TRANSITION (LURIC8.ORRTH)

NOTE: Chart not to scale.

SC-5, 20 FEB 2025 to 20 MAR 2025

SC-5, 20 FEB 2025 to 20 MAR 2025