

WAAS CH <b>97504</b> <b>W36A</b>	APP CRS <b>355°</b>	Rwy Idg <b>6610</b> TDZE <b>164</b> Apt Elev <b>166</b>
--	------------------------	---

# RNAV (GPS) RWY 36

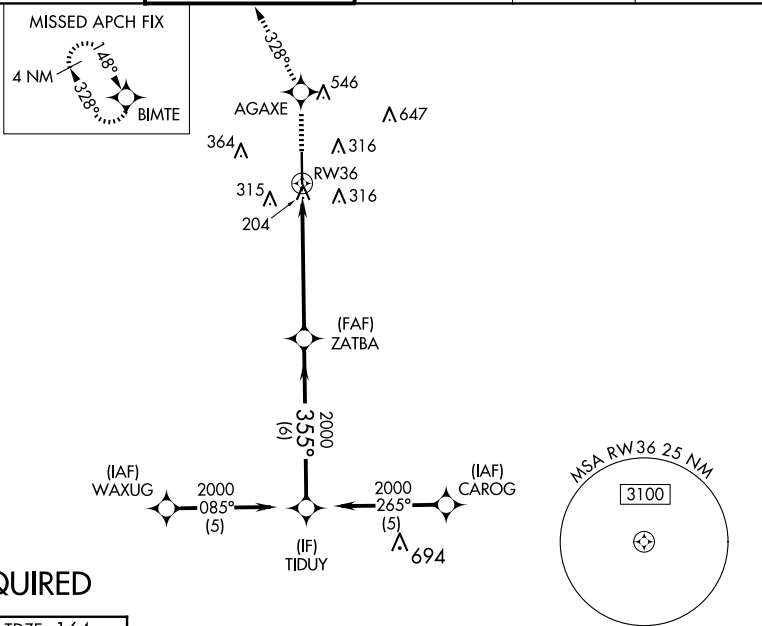
HOUSTON EXEC (TME)

RNP APCH - GPS.

▼ Baro-VNAV NA when using David Wayne Hooks Meml altimeter setting. For uncompensated Baro-VNAV systems, LNAV/VNAV NA below -15°C and above 48°C. VDP NA when using David Wayne Hooks Meml altimeter setting. When local altimeter setting not received, use David Wayne Hooks Meml altimeter setting and increase LPV DA to 471 feet, LNAV/VNAV DA to 719 feet; increase all MDA 60 feet. Increase LNAV/VNAV visibility ¼ mile all Cats and LNAV and circling Cat C/D ¼ mile.

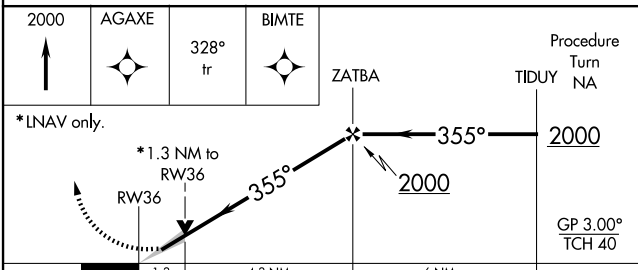
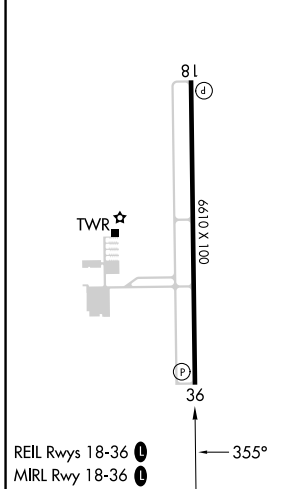
MISSED APPROACH:  
Climb to 2000 direct  
AGAXE and via 328°  
track to BIMTE and  
hold.

ATIS <b>119.525</b>	HOUSTON APP CON <b>123.8 257.7</b>	EXECUTIVE TOWER ★ <b>126.975</b> (CTAF) <b>0</b>	GND CON <b>132.075</b>	CLNC DEL <b>132.075</b>	UNICOM <b>122.975</b>
------------------------	---------------------------------------	---	---------------------------	----------------------------	--------------------------



**RADAR REQUIRED**

ELEV 166	TDZE 164
----------	----------



CATEGORY	A	B	C	D
LPV DA	414-1 250 (300-1)			
LNAV/VNAV DA	662-1¾ 498 (500-1¾)			
LNAV MDA	620-1	456 (500-1)	620-1¼ 456 (500-1¼)	620-1½ 456 (500-1½)
CIRCLING	820-1	654 (700-1)	860-2 694 (700-2)	1000-2¾ 834 (900-2¾)