

STRYA EIGHT DEPARTURE (RNAV)

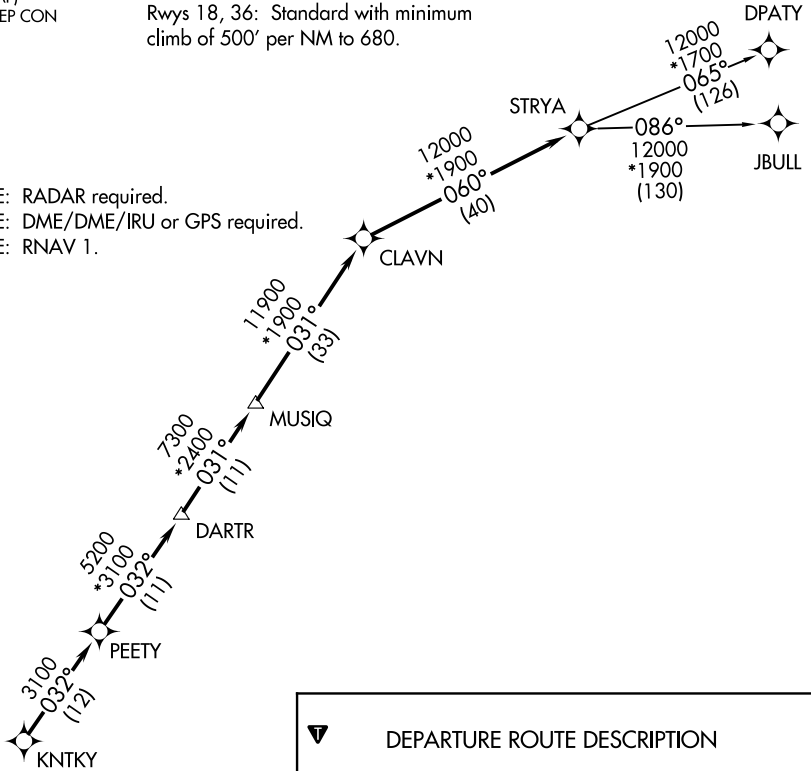
TOP ALTITUDE: ASSIGNED BY ATC

ATIS
119.525
CLNC DEL
132.075
GND CON
132.075
EXECUTIVE TOWER★
126.975 (CTAF)
HOUSTON DEP CON
123.8 257.7

TAKEOFF MINIMUMS

Rwys 18, 36: Standard with minimum climb of 500' per NM to 680.

NOTE: RADAR required.
NOTE: DME/DME/IRU or GPS required.
NOTE: RNAV 1.



▼ DEPARTURE ROUTE DESCRIPTION

TAKEOFF RUNWAY 18: Climb on heading 175° to 680 for RADAR vectors to KNTKY, thence. . . .

TAKEOFF RUNWAY 36: Climb on heading 355° to 680 for RADAR vectors to KNTKY, thence. . . .

. . . .on track 032° to PEETY, then on track 032° to DARTR, then on track 031° to MUSIQ, then on track 031° to CLAVN, then on track 060° to STRYA, then on (transition). Maintain ATC assigned altitude. Expect filed altitude 10 minutes after departure.

DPATY TRANSITION (STRYA8.DPATY)
JBULL TRANSITION (STRYA8.JBULL)



NOTE: Chart not to scale.

SC-5, 20 FEB 2025 to 20 MAR 2025

SC-5, 20 FEB 2025 to 20 MAR 2025

STRYA EIGHT DEPARTURE (RNAV)

(STRYA8.STRYA) 07OCT21

HOUSTON, TEXAS
HOUSTON EXEC (TME)