

WAAS CH 58117 W23A	APP CRS 231°	Rwy Idg 5000 TDZE 33 Apt Elev 34
--	------------------------	---

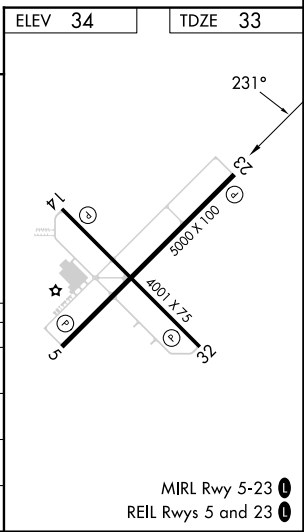
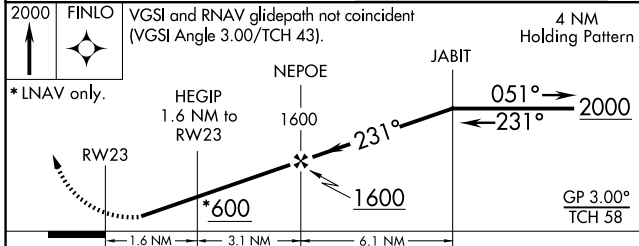
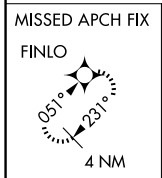
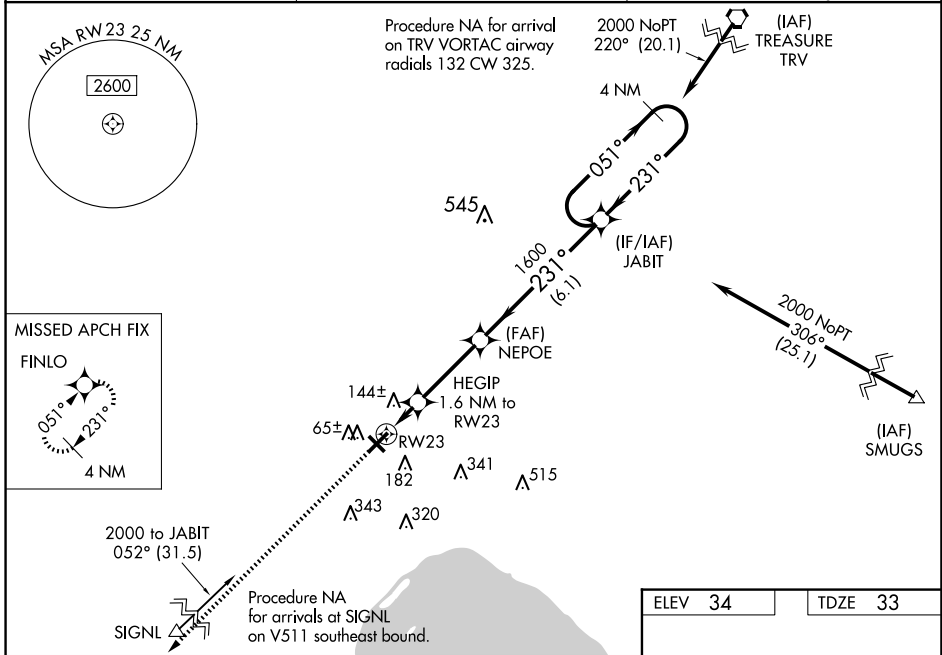
RNAV (GPS) RWY 23

OKEECHOBEE COUNTY (OBE)

⚠ Baro-VNAV NA when using Vero Beach altimeter setting. For uncompensated Baro-VNAV systems, LNAV/VNAV NA below -2°C (29°F) or above 43°C (109°F). DME/DME RNP-0.3 NA. Helicopter visibility reduction below 1 SM NA. When local altimeter setting not received, use Vero Beach altimeter setting: increase LPV DA to 392 feet and increase visibility all Cats ½ SM; increase LNAV/VNAV DA to 512 feet and increase visibility all Cats ¾ SM; increase all MDAs 80 feet and LNAV visibility Cats C and D ¾ SM and Circling visibility Cats C and D ¼ SM. Procedure NA at night.

MISSED APPROACH:
Climb to 2000 direct FINLO and hold.

AWOS-3 118.675	MIAMI CENTER 132.25 370.9	UNICOM 123.0 (CTAF)
--------------------------	-------------------------------------	-------------------------------



CATEGORY	A	B	C	D
LPV DA		315-1	282 (300-1)	
LNAV/VNAV DA		435-1¼	402 (500-1¼)	
LNAV MDA		400-1	367 (400-1)	
CIRCLING	500-1	466 (500-1)	660-1¾ 626 (700-1¾)	660-2 626 (700-2)

SE-3, 20 FEB 2025 to 20 MAR 2025

SE-3, 20 FEB 2025 to 20 MAR 2025