

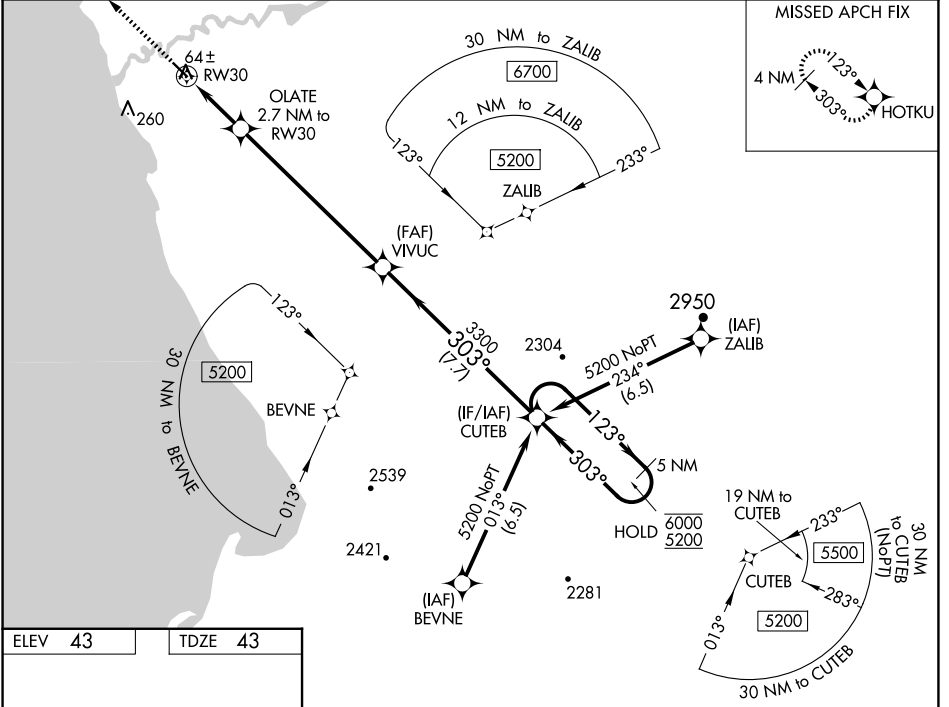
WAAS CH <b>58310</b> <b>W30A</b>	APP CRS <b>303°</b>	Rwy ldg TDZE Apt Elev	<b>4000</b> <b>43</b> <b>43</b>
--	------------------------	-----------------------------	---------------------------------------

# RNAV (GPS) RWY 30

QUINHAGAK (AQH) (PAQH)

RNP APCH - GPS.	MISSED APPROACH: Climb to 2500 direct HOTKU and hold, continue climb-in-hold to 2500.
<p>For uncompensated Baro-VNAV systems, LNAV/VNAV NA below -25°C or above 54°C.</p>	

AWOS-3P <b>121.575</b>	ANCHORAGE CENTER <b>125.2 372.0</b>	KENAI RADIO <b>122.1</b>	UNICOM <b>122.8 (CTAF) 0</b>
---------------------------	--	-----------------------------	---------------------------------



ELEV 43	TDZE 43
---------	---------

<p>MIRL Rwy 12-30 0</p>	<p>2500 HOTKU</p>	<p>5 NM Holding Pattern</p>			
	<p>OLATE 2.7 NM to RW30</p> <p>0.7 NM to RW30</p> <p>RW30</p> <p>960</p>	<p>VIVUC</p> <p>3300</p>	<p>CUTEB</p> <p>3300</p>	<p>6000</p> <p>5200</p>	<p>GP 3.10°</p> <p>TCH 35</p>
	CATEGORY	A	B	C	D
	LPV DA		293-1	250 (300-1)	
	LNAV/VNAV DA		293-1	250 (300-1)	
LNAV MDA		320-1	277 (300-1)		
CIRCLING	400-1 357 (400-1)	500-1 457 (500-1)	580-1½ 537 (600-1½)	600-2 557 (600-2)	

AK, 20 FEB 2025 to 17 APR 2025

AK, 20 FEB 2025 to 17 APR 2025