

WAAS CH 50133 W11A	APP CRS 105°	Rwy Idg 3302 TDZE 1183 Apt Elev 1183
--	------------------------	---

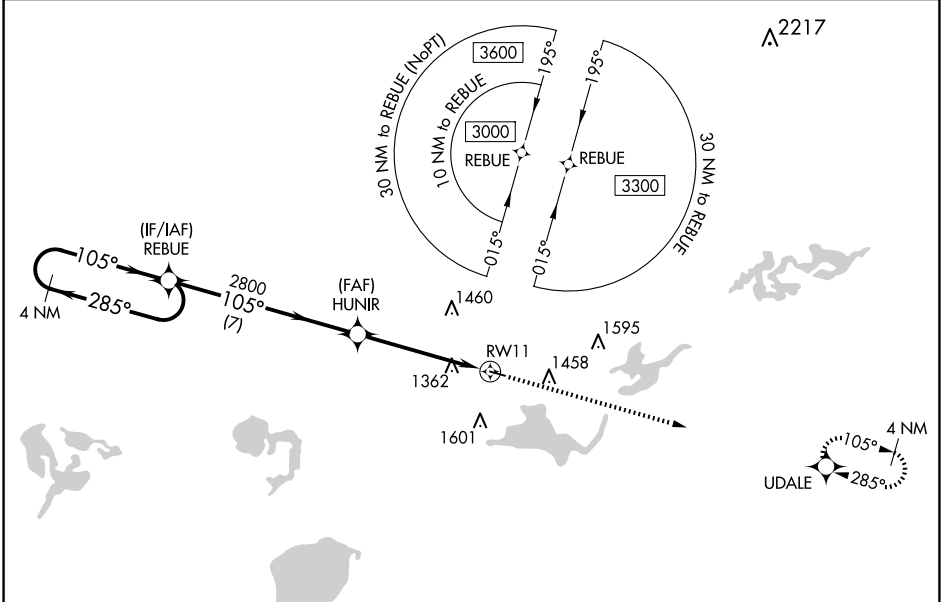
RNAV (GPS) RWY 11

PAYNESVILLE MUNI (PEX)

⚠ Baro-VNAV and VDP NA when using Litchfield altimeter setting. For uncompensated Baro-VNAV systems, LNAV/VNAV NA below -17°C (2°F) or above 54°C (130°F). DME/DME RNP-0.3 NA. When local altimeter setting not received, use Litchfield altimeter setting and increase all DA 51 feet and all MDA 60 feet; increase LPV and LNAV/VNAV all Cats visibility 1/8 mile and LNAV Cat C and Circling Cat C visibility 1/4 mile.

MISSED APPROACH:
Climb to 3000 direct UDALE and hold.

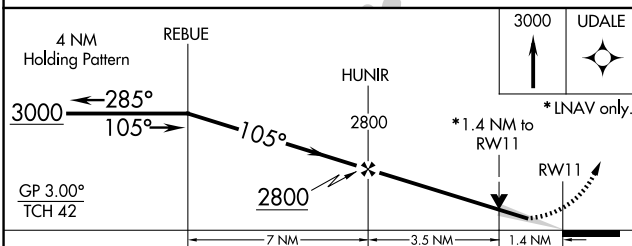
AWOS-3PT 120.35	MINNEAPOLIS CENTER 125.5 323.1	CTAF 122.9 ⓪
---------------------------	--	-------------------------------



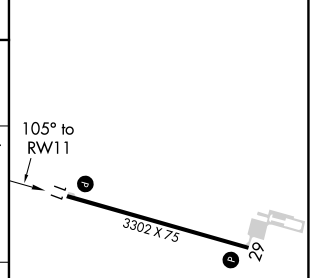
NC-1, 20 FEB 2025 to 20 MAR 2025

NC-1, 20 FEB 2025 to 20 MAR 2025

ELEV 1183	TDZE 1183
-----------	-----------



CATEGORY	A	B	C	D
LPV DA	1383-1 200 (200-1)			NA
LNAV/VNAV DA	1653-1 1/8 470 (500-1 1/8)			NA
LNAV MDA	1680-1	497 (500-1)	1680-1 1/8 497 (500-1 1/8)	NA
CIRCLING	1680-1 497 (500-1)	1760-1 577 (600-1)	1920-2 737 (800-2)	NA



MIRL Rwy 11-29 **⓪**
REIL Rwy 11 and 29 **⓪**