

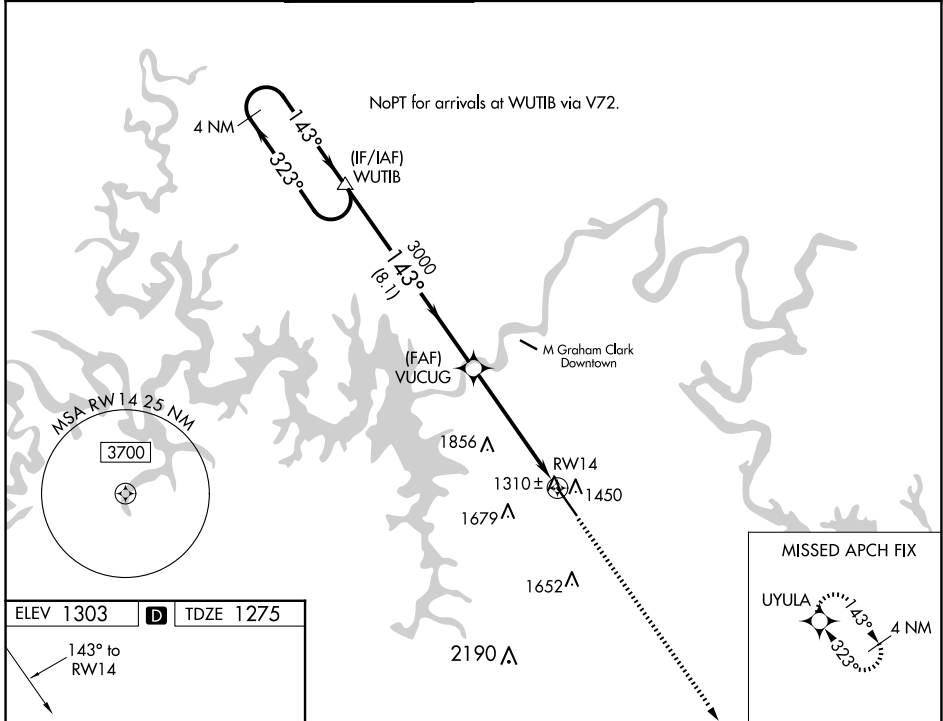
WAAS CH <b>49111</b> <b>W14A</b>	APP CRS <b>143°</b>	Rwy Idg TDZE Apt Elev	<b>7140</b> <b>1275</b> <b>1303</b>
--	------------------------	-----------------------------	---

# RNAV (GPS) RWY 14

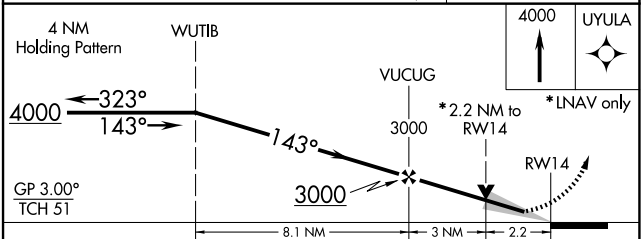
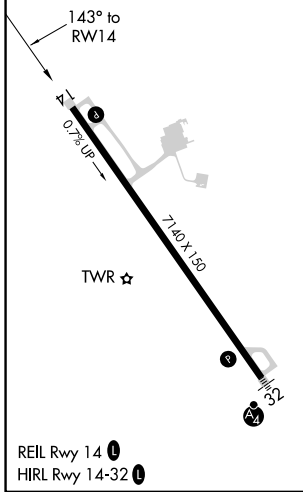
BRANSON (BBG)

RNP APCH.		MISSED APPROACH: Climb to 4000 direct UYULA and hold.	
<p>▼ For uncompensated Baro-VNAV systems, LNAV/VNAV NA below -17°C or above 46°C. When local altimeter setting not received, use Harrison altimeter setting and increase all DA 47 feet and all MDA 60 feet. VDP and Baro-VNAV NA when using Harrison altimeter setting.</p>			

ATIS <b>124.625</b>	SPRINGFIELD APP CON <b>126.35</b>	<b>BRANSON TOWER*</b> <b>128.15</b> (CTAF) <b>0</b>	GND CON <b>118.4</b>	CLNC DEL <b>118.4</b>	SPRINGFIELD CLNC DEL <b>126.35</b> (When tower closed)	UNICOM <b>122.95</b>
------------------------	--------------------------------------	--	-------------------------	--------------------------	--	-------------------------



ELEV 1303	<b>D</b>	TDZE 1275
-----------	----------	-----------



CATEGORY	A	B	C	D
LPV DA	1525-1 250 (300-1)			
LNAV/VNAV DA	1798-2 523 (500-2)			
LNAV MDA	2020-1 745 (800-1)	2020-1¼ 745 (800-1¼)	2020-2¼ 745 (800-2¼)	2020-2½ 745 (800-2½)

NC-3, 20 FEB 2025 to 20 MAR 2025

NC-3, 20 FEB 2025 to 20 MAR 2025