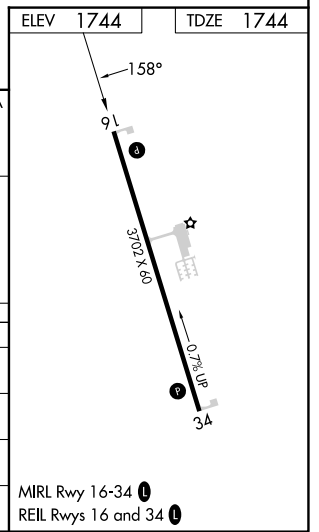
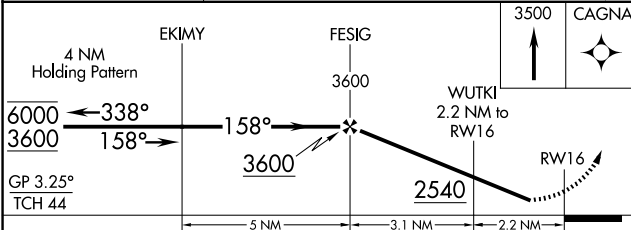
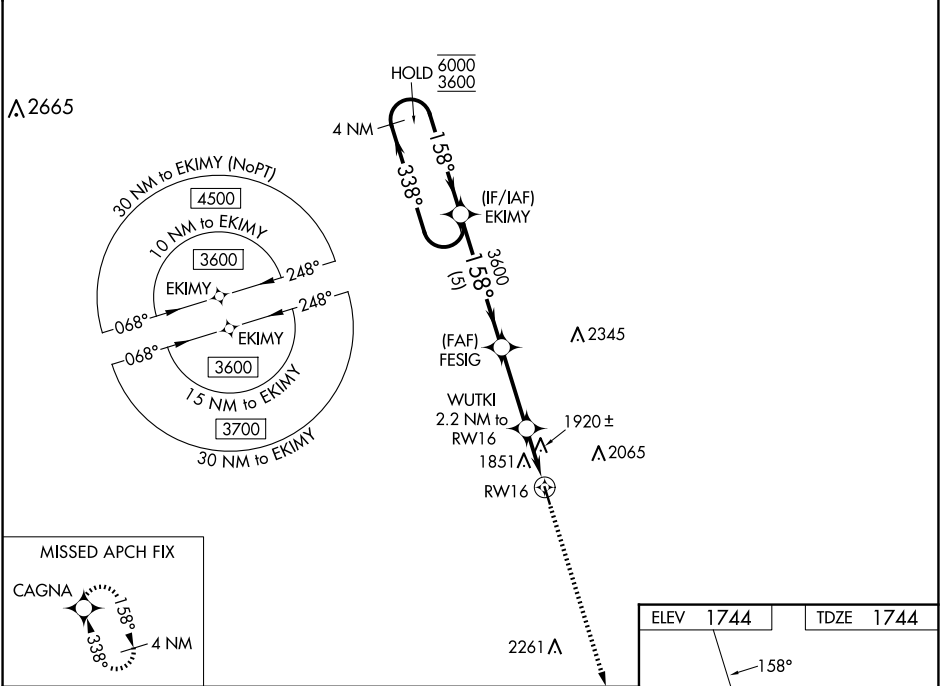


WAAS CH <b>82027</b> <b>W16A</b>	APP CRS <b>158°</b>	Rwy Idg TDZE Apt Elev	<b>3702</b> <b>1744</b> <b>1744</b>
--	------------------------	-----------------------------	---

# RNAV (GPS) RWY 16

RED CLOUD MUNI (7V7)

RNP APCH - GPS.		MISSED APPROACH: Climb to 3500 direct CAGNA and hold.
<p><b>NA</b> Baro-VNAV NA. Rwy 16 helicopter visibility reduction below 3/4 SM NA. Use K82 altimeter setting; when not received, use HSI altimeter setting and increase LPV DA to 2120 feet; increase LNAV/VNAV DA to 2290 feet and all visibilities 1/2 SM. Increase all MDAs 60 feet.</p>		
K82 AWOS-3PT <b>118.45</b>	MINNEAPOLIS CENTER <b>119.4 278.8</b>	CTAF <b>122.9 0</b>



CATEGORY	A	B	C	D
LPV DA	2075-1	331 (400-1)		NA
LNAV/VNAV DA	2245-1 3/8	501 (600-1 3/8)		NA
LNAV MDA	2240-1	496 (500-1)		NA
CIRCLING	2280-1 536 (600-1)	2300-1 556 (600-1)		NA

NC-2, 20 FEB 2025 to 20 MAR 2025

NC-2, 20 FEB 2025 to 20 MAR 2025