

|             |          |             |
|-------------|----------|-------------|
| APP CRS     | Rwy Idg  | <b>3701</b> |
| <b>339°</b> | TDZE     | <b>55</b>   |
|             | Apt Elev | <b>55</b>   |

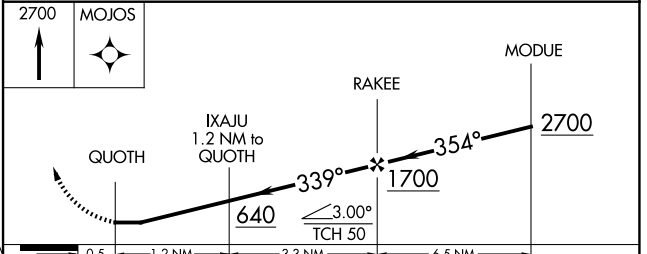
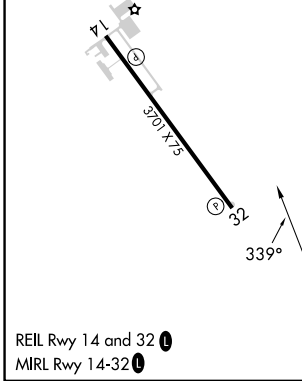
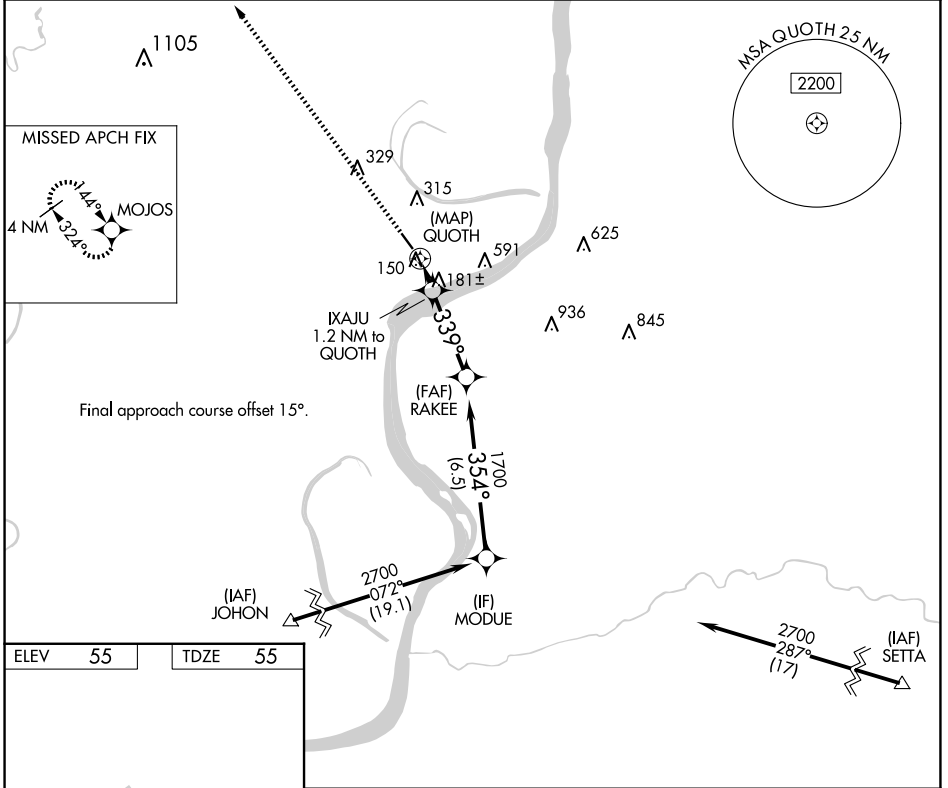
# RNAV (GPS) RWY 32

CONCORDIA PARISH (ØR4)

**NA** DME/DME RNP-0.3 NA. Use Natchez altimeter setting; when not received, use Esler Rgnl altimeter setting and increase all MDA 60 feet and Circling Cat C visibility ¼ mile. Helicopter visibility reduction below ¾ SM NA.

MISSED APPROACH: Climb to 2700 direct MOJOS and hold.

|                        |  |                                 |
|------------------------|--|---------------------------------|
| AWOS-3<br><b>118.2</b> | HOUSTON CENTER<br><b>120.975 299.6</b> | UNICOM<br><b>122.8 (CTAF) Ø</b> |
|------------------------|--|---------------------------------|



| CATEGORY          | A     | B           | C                             | D  |
|-------------------|-------|-------------|-------------------------------|----|
| LNAV MDA          | 500-1 | 445 (500-1) | 500-1 3/8<br>445 (500-1 3/8)  | NA |
| <b>C</b> CIRCLING | 680-1 | 625 (700-1) | 960-2 3/4<br>905 (1000-2 3/4) | NA |

SC-4, 20 FEB 2025 to 20 MAR 2025

SC-4, 20 FEB 2025 to 20 MAR 2025