

WAAS CH 62928 W28A	APP CRS 280°	Rwy Idg TDZE 928 Apt Elev 928	4549
--	------------------------	---	-------------

RNAV (GPS) RWY 28

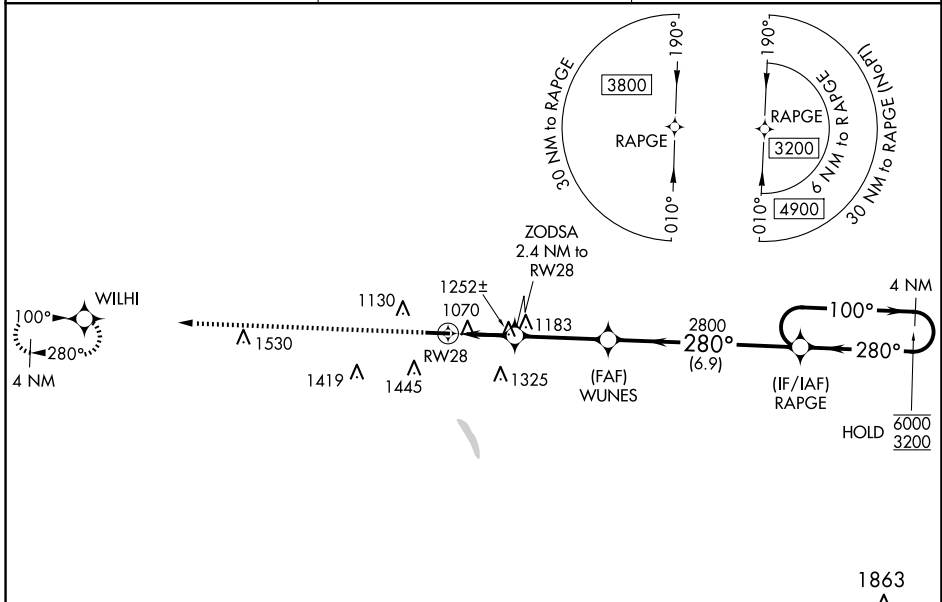
BOGGS FLD (USW)

RNP APCH.

▼ Rwy 28 helicopter visibility reduction below 1 SM NA. Rwy 28 Straight-in and Circling minimums NA at night. When local altimeter setting not received, use Charleston altimeter setting and increase all MDA's 80 feet, LP and LNAV Cats C and D visibility $\frac{1}{8}$ SM and Circling Cats C and D visibility $\frac{1}{4}$ SM. *1780 when using Charleston altimeter setting.

MISSED APPROACH:
Climb to 3500 direct WILHI and hold.

AWOS-3 118.575	CHARLESTON APP CON 124.1 269.125	UNICOM 122.725 (CTAF) ①
--------------------------	--	-----------------------------------



ELEV 928	TDZE 928
----------	----------

Visual Segment - Obstacles.

Obstacles: WUNES, RAPGE, 4 NM Holding Pattern

Altitudes: 3500, 1720*, 2800, 6000, 3200

Distances: 2.4 NM, 3.4 NM, 6.9 NM, 4 NM

CATEGORY	A	B	C	D
LP MDA	1520-1	592 (600-1)	1520-1 $\frac{3}{4}$	592 (600-1 $\frac{3}{4}$)
LNAV MDA	1520-1	592 (600-1)	1520-1 $\frac{3}{4}$	592 (600-1 $\frac{3}{4}$)
ⓐ CIRCLING	1560-1 632 (700-1)	1760-1 $\frac{1}{4}$ 832 (900-1 $\frac{1}{4}$)	1760-2 $\frac{1}{2}$ 832 (900-2 $\frac{1}{2}$)	1760-2 $\frac{3}{4}$ 832 (900-2 $\frac{3}{4}$)

NE-4, 20 FEB 2025 to 20 MAR 2025

NE-4, 20 FEB 2025 to 20 MAR 2025