

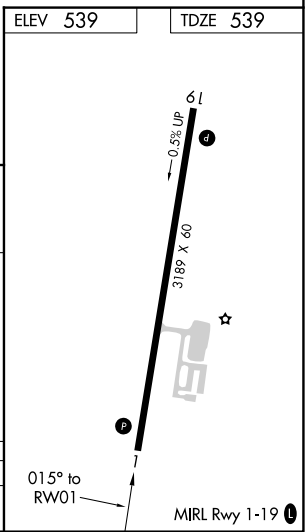
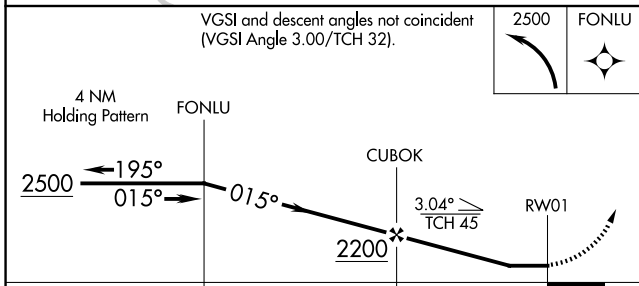
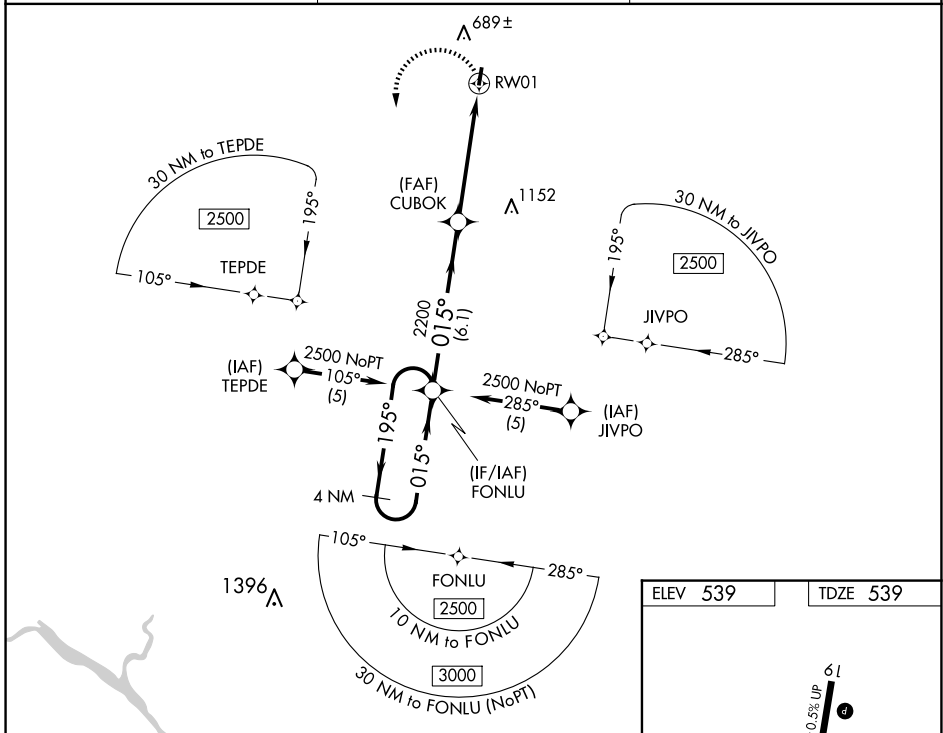
APP CRS	Rwy ldg	3189
015°	TDZE	539
	Apt Elev	539

RNAV (GPS) RWY 1

SALUDA COUNTY (6J4)

RNP APCH.	<p>⚠ Procedure NA at night. Rwy 1 helicopter visibility reduction below 1 SM NA. Use Aiken altimeter setting; when not received, use Augusta Rgnl at Bush Fld altimeter setting and increase all MDA 100 feet and increase LNAV Cat C visibility ¼ SM.</p>	<p>⚠ MISSED APPROACH: Climbing left turn to 2500 direct FONLU and hold.</p>
-----------	---	--

AIK AWOS-3 118.025	AUGUSTA APP CON ★ 119.15	CTAF 122.9
------------------------------	------------------------------------	----------------------



CATEGORY	A	B	C	D
LNAV MDA	1160-1	621 (700-1)	1160-1¼ 621 (700-1¼)	NA

SE-2, 20 FEB 2025 to 20 MAR 2025

SE-2, 20 FEB 2025 to 20 MAR 2025