

WAAS CH 97637 W27A	APP CRS 268°	Rwy Idg 3500 TDZE 912 Apt Elev 916
--	------------------------	---

RNAV (GPS) RWY 27

OCEANA COUNTY (C04)

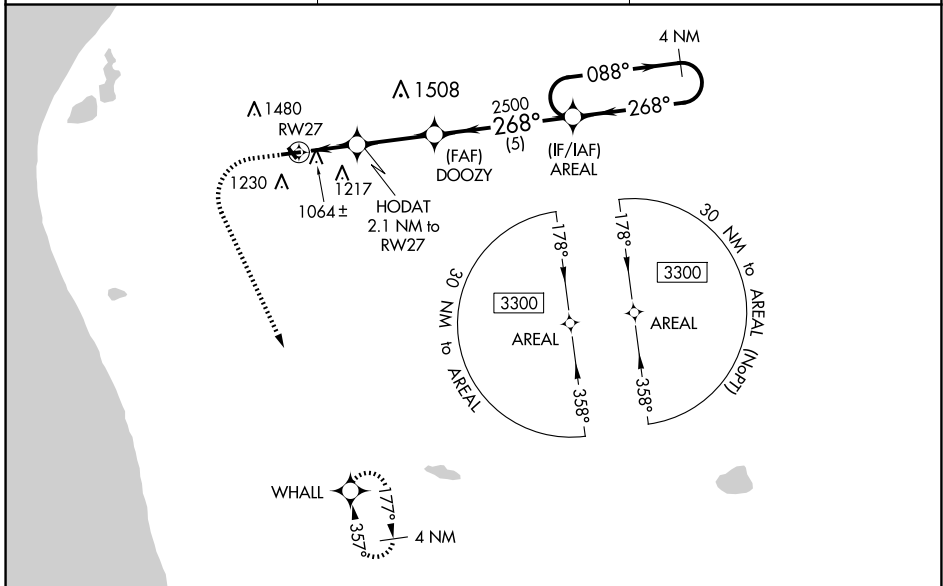
NA Baro-VNAV NA when using Fremont altimeter setting. For uncompensated Baro-VNAV systems, LNAV/VNAV NA below -16°C (4°F) or above 54°C (130°F). When local altimeter setting not received, use Fremont altimeter setting and increase all DA 64 feet, all MDA 80 feet, and LPV and LNAV/VNAV visibility all Cats ¼ mile. DME/DME RNP-0.3 NA. Procedure NA at night. Helicopter visibility reduction below 1 SM NA. Circling NA to Rwy 15 and 33.

MISSED APPROACH:
Climb to 1500 then climbing left turn to 3300 direct WHALL and hold.

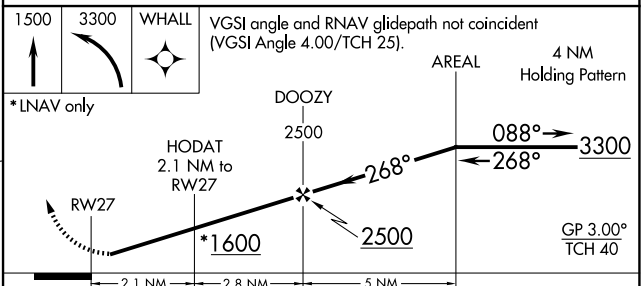
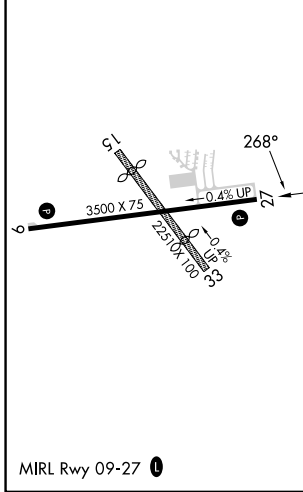
AWOS-AV
122.7

GREAT LAKES APP CON*
119.8 290.35

UNICOM
122.7 (CTAF) 0



ELEV 916	TDZE 912
----------	----------



CATEGORY	A	B	C	D
LPV DA	1254-1 1/8	342 (400-1 1/8)		NA
LNAV/VNAV DA	1236-1 1/8	324 (400-1 1/8)		NA
LNAV MDA	1340-1	428 (500-1)		NA
CIRCLING	1540-1	1780-1 1/4		NA
	624 (700-1)	864 (900-1 1/4)		