

APP CRS	Rwy Idg	3500
088°	TDZE	916
	Apt Elev	916

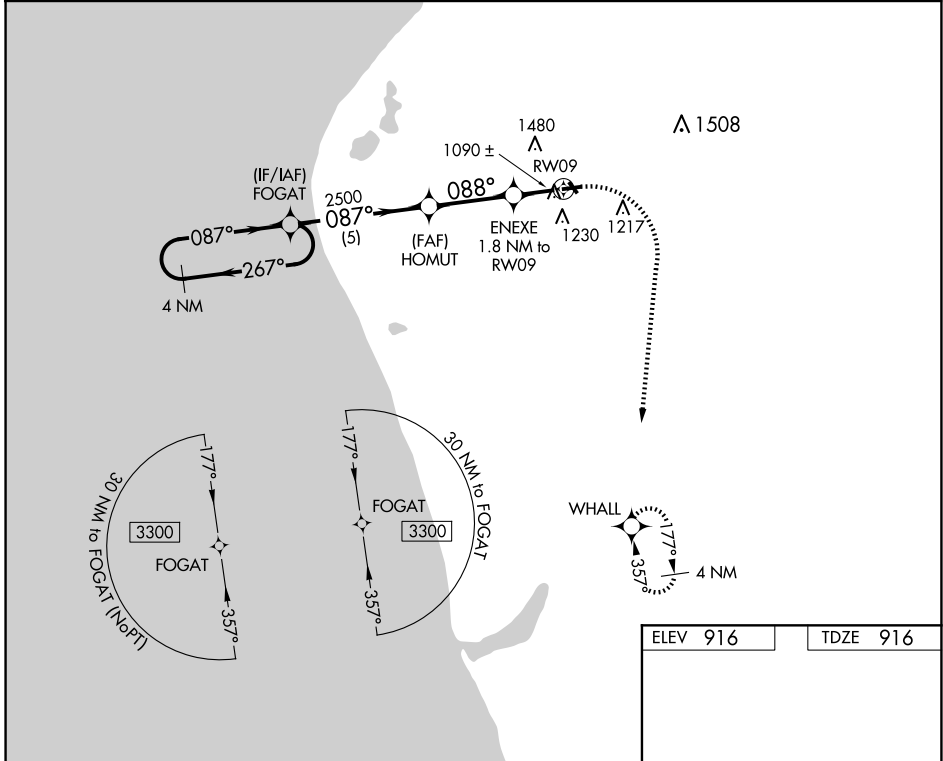
RNAV (GPS) RWY 9

OCEANA COUNTY (C04)

NA When local altimeter setting not received, use Fremont altimeter setting and increase all MDAs 80 feet. DME/DME RNP-0.3 NA. Procedure NA at night. Helicopter visibility reduction below 1 SM NA. Circling NA to Rwy 15 and 33.

MISSED APPROACH:
Climbing right turn to 3300 direct WHALL and hold.

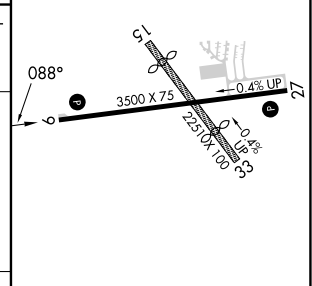
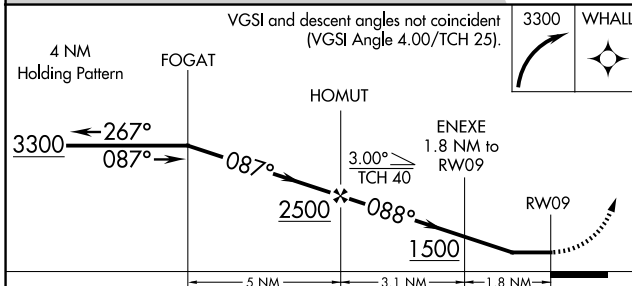
AWOS-AV 122.7	GREAT LAKES APP CON* 119.8 290.35	UNICOM 122.7 (CTAF)
--------------------------------	--	--------------------------------------



EC-1, 20 FEB 2025 to 20 MAR 2025

EC-1, 20 FEB 2025 to 20 MAR 2025

ELEV 916	TDZE 916
----------	----------



CATEGORY	A	B	C	D
LNAV MDA	1340-1	424 (500-1)		NA
CIRCLING	1540-1 624 (700-1)	1780-1¼ 864 (900-1¼)		NA

MIRL Rwy 09-27