

LOC/DME I-PUK <b>111.15</b> Chan 48 (Y)	APP CRS <b>162°</b>	Rwy ldg TDZE Apt Elev	<b>10000</b> <b>69</b> <b>69</b>
---	------------------------	-----------------------------	--

# ILS or LOC RWY 16

NORTHWEST FLORIDA BEACHES INTL (ECP)

DME required for procedure entry. DME required.

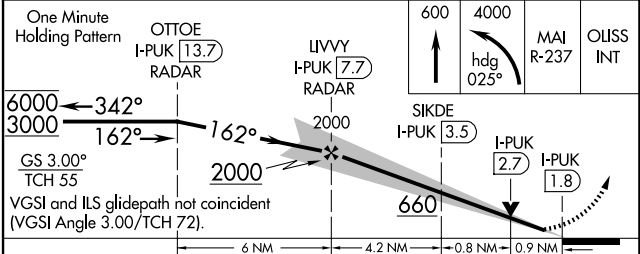
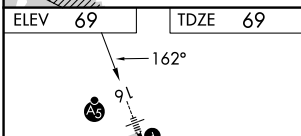
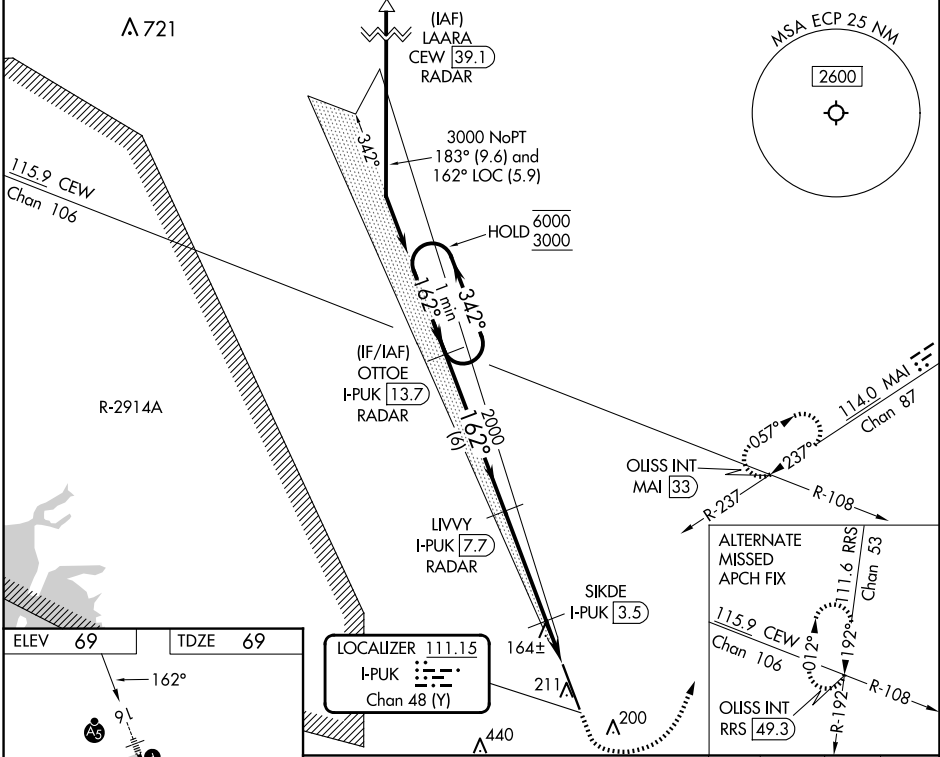
For inop ALS, increase S-LOC 16 Cat C/D visibility to RVR 5500.  
#RVR 1800 authorized with use of FD or AP or HUD to DA.

MALSRL



MISSED APPROACH: Climb to 600 then climbing left turn to 4000 on heading 025° and on MAI VORTAC R-237 to OLISS INT/MAI 33 DME and hold, continue climb-in-hold to 4000.

ATIS <b>119.975</b>	TYNDALL APP CON ★ <b>125.2</b> (N above 5000')	PANAMA CITY TOWER★ <b>118.95</b> (CTAF) 0	GND CON <b>121.65</b>	CLNC DEL <b>123.75</b>
------------------------	---	--	--------------------------	---------------------------



One Minute Holding Pattern	OTTOE I-PUK [13.7] RADAR	LIVVY I-PUK [7.7] RADAR	SIKDE I-PUK [3.5]	600	4000	MAI R-237	OLISS INT
6000 ← 342°	162° →	162° →	762° →	2000	2000	I-PUK [2.7]	I-PUK [1.8]
GS 3.00° TCH 55	VGSJ and ILS glidepath not coincident (VGSJ Angle 3.00/TCH 72).						
6000	3000	6 NM	4.2 NM	0.8 NM	0.9 NM		
TDZ/CL Rwy 16	HIRL Rwy 16-34						
REIL Rwy 34							
CATEGORY	A	B	C	D			
S-ILS 16 #	269/24 200 (200-½)						
S-LOC 16	440/24	371 (400-½)	440/35	371 (400-¾)			
CIRCLING	520-1	451 (500-1)	520-1½	620-2			
			451 (500-1½)	551 (600-2)			

SE-3, 20 FEB 2025 to 20 MAR 2025

SE-3, 20 FEB 2025 to 20 MAR 2025