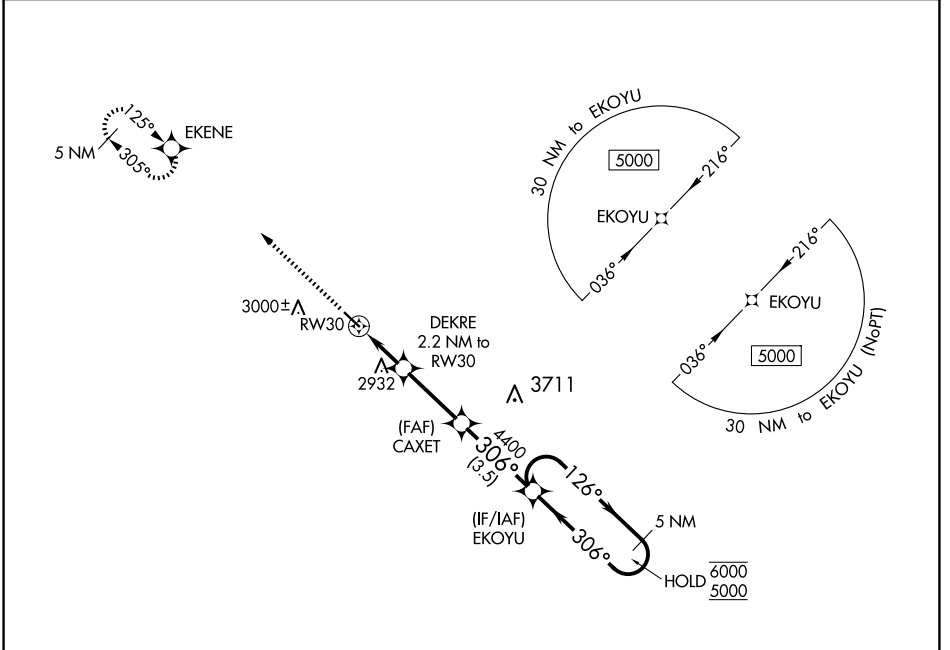


WAAS CH <b>66038</b> <b>W30A</b>	APP CRS <b>306°</b>	Rwy Idg TDZE Apt Elev	<b>4200</b> <b>2754</b> <b>2756</b>
--	------------------------	-----------------------------	---

# RNAV (GPS) RWY 30

BEACH (20U)

RNP APCH.		MISSED APPROACH: Climb to 4700 direct EKENE and hold.
<p>▼ For uncompensated Baro-VNAV systems, LNAV/VNAV NA below -20°C or above 54°C. Rwy 30 helicopter visibility reduction below 3/4 SM NA.</p>		
AWOS-3 <b>118.175</b>	SALT LAKE CENTER <b>126.85 305.2</b>	UNICOM <b>122.8 (CTAF) 0</b>



NC-1, 20 FEB 2025 to 20 MAR 2025

NC-1, 20 FEB 2025 to 20 MAR 2025

ELEV 2756	TDZE 2754	4700	EKENE	VGSI and RNAV glidepath not coincident (VGSI Angle 3.00/TCH 27).	5 NM Holding Pattern
		<p>* LNAV only</p> <p>DEKRE 2.2 NM to RW30</p> <p>CAXET 4400</p> <p>RW30</p> <p>* 1.3 NM to RW30</p> <p>* 3480</p> <p>4400</p> <p>EKOYU</p> <p>126° → 6000</p> <p>← 306° 5000</p> <p>GP 3.00° TCH 40</p>			
		1.3 NM	0.9 NM	2.9 NM	3.5 NM
CATEGORY	A	B	C	D	
LPV DA	3004-1	250 (300-1)			NA
LNAV/VNAV DA	3175-1½	421 (500-1½)			NA
LNAV MDA	3180-1	426 (500-1)			NA
<input checked="" type="checkbox"/> CIRCLING	3280-1	3360-1			NA
	524 (600-1)	604 (700-1)			