

| | | |
|--|------------------------|-------------------------|
| WAAS CH 45832 W17A | APP CRS 166° | Rwy Idg 3400 |
| | | TDZE 1246 |
| | | Apt Elev 1246 |

RNAV (GPS) RWY 17

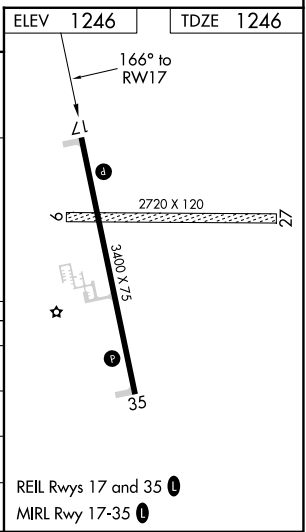
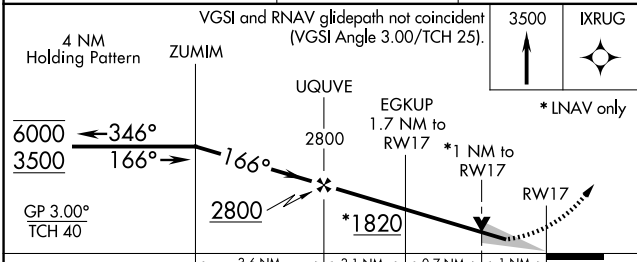
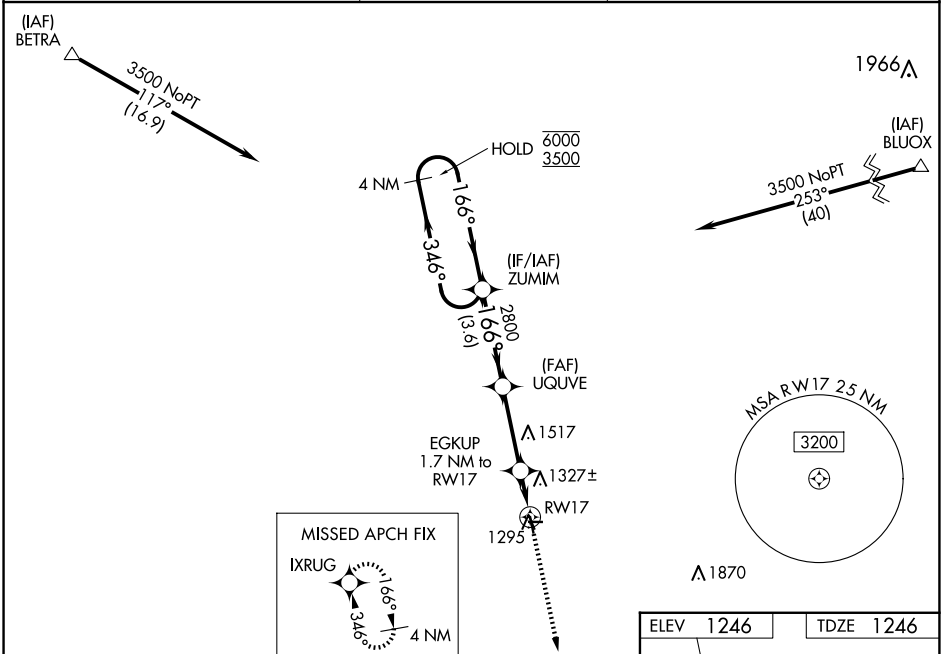
MAHNOMEN COUNTY (3N8)

RNP APCH.

⚠ Circling NA to Rwy 9 and 27. Baro-VNAV and VDP NA when using Fosston altimeter setting. For uncompensated Baro-VNAV systems, LNAV/VNAV NA below -17°C or above 54°C. When local altimeter setting not received, use Fosston altimeter setting and increase all DA to 1549 feet; increase all MDA 60 feet.

MISSED APPROACH:
Climb to 3500 direct
IXRUG and hold.

| | | |
|----------------------------|---|----------------------|
| AWOS-3PT 121.125 | MINNEAPOLIS CENTER 127.35 278.3 | CTAF 122.9 |
|----------------------------|---|----------------------|



| CATEGORY | A | B | C | D |
|-------------------|-----------------------|-----------------------|---|----|
| LPV DA | 1496-1 | 250 (300-1) | | NA |
| LNAV/VNAV DA | 1496-1 | 250 (300-1) | | NA |
| LNAV MDA | 1580-1 | 334 (400-1) | | NA |
| C CIRCLING | 1640-1 394 (400-1) | 1700-1 454 (500-1) | | NA |

NC-1, 20 FEB 2025 to 20 MAR 2025

NC-1, 20 FEB 2025 to 20 MAR 2025