

WAAS CH 56532 W35A	APP CRS 346°	Rwy Idg 3400 TDZE 1246 Apt Elev 1246
--	------------------------	---

RNAV (GPS) RWY 35

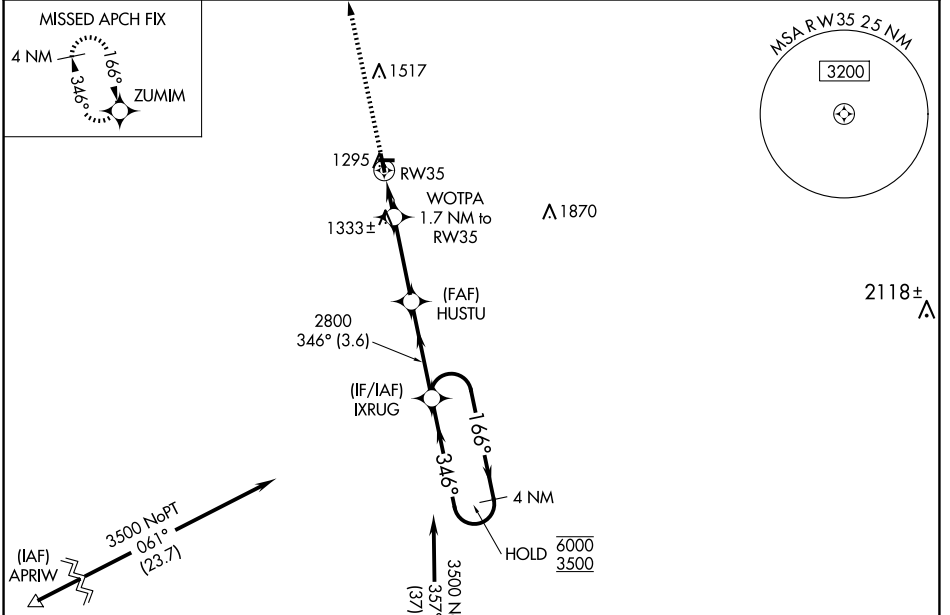
MAHNOMEN COUNTY (3N8)

RNP APCH.

⚠ Circling NA to Rwy 9 and 27. Baro-VNAV and VDP NA when using Fosston altimeter setting. For uncompensated Baro-VNAV systems, LNAV/VNAV NA below -17°C or above 54°C. When local altimeter setting not received, use Fosston altimeter setting and increase all DA to 1549 feet; increase all MDA 60 feet.

⚠ MISSED APPROACH: Climb to 3500 direct ZUMIM and hold.

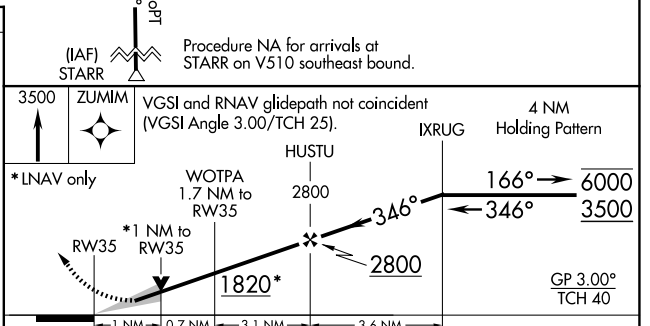
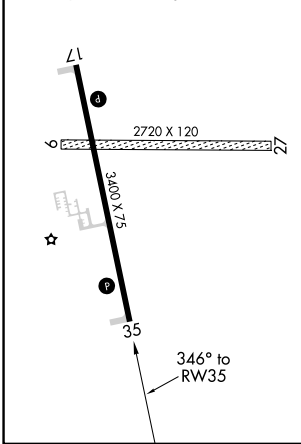
AWOS-3PT 121.125	MINNEAPOLIS CENTER 127.35 278.3	CTAF 122.9
----------------------------	---	----------------------



NC-1, 20 FEB 2025 to 20 MAR 2025

NC-1, 20 FEB 2025 to 20 MAR 2025

ELEV 1246	TDZE 1246
MIRL Rwy 17-35 Ⓛ	
REIL Rwy 17 and 35 Ⓛ	



CATEGORY	A		B	C	D
	LPV DA	1496-1	250 (300-1)		
LNAV/VNAV DA	1496-1	250 (300-1)			NA
LNAV MDA	1600-1	354 (400-1)			NA
C CIRCLING	1640-1 394 (400-1)	1700-1 454 (500-1)			NA