

WAAS CH <b>69531</b> <b>W27A</b>	APP CRS <b>276°</b>	Rwy Idg TDZE Apt Elev	<b>4403</b> <b>2036</b> <b>2037</b>
----------------------------------------	------------------------	-----------------------------	-------------------------------------------

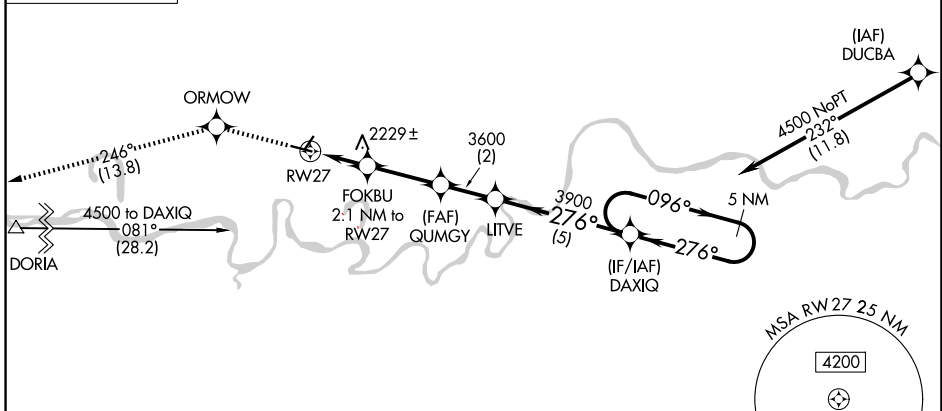
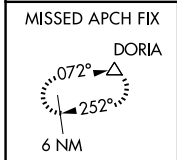
# RNAV (GPS) RWY 27

POPLAR MUNI (PO1)

**NA** For uncompensated Baro-VNAV systems, LNAV/VNAV NA below -19°C (-2°F) or above 54°C (130°F). DME/DME RNP -0.3 NA. When local altimeter setting not received, use Wolf Point altimeter setting: increase LPV DA to 2332, LNAV/VNAV DA to 2582 and all Cats visibility ¼ SM; increase all MDAs 60 feet and Circling Cat C/D visibility ¼ SM. Baro-VNAV and VDP NA with Wolf Point altimeter setting. Helicopter visibility reduction below 1 SM not authorized. Circling NA to Rwy 2/20.

**MISSED APPROACH:** Climb to 6000 direct ORMOW and on track 246° to DORIA and hold, continue climb-in-hold to 6000.

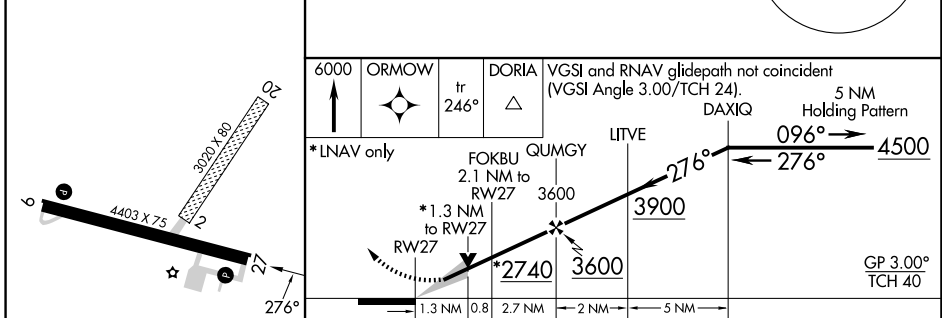
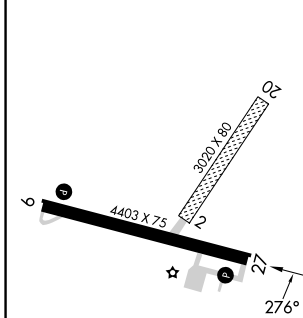
AWOS-3PT <b>135.325</b>	SALT LAKE CITY CENTER <b>126.85 305.2</b>	UNICOM <b>122.8 (CTAF) 0</b>
----------------------------	----------------------------------------------	---------------------------------



NW-1, 20 FEB 2025 to 20 MAR 2025

NW-1, 20 FEB 2025 to 20 MAR 2025

ELEV 2037	TDZE 2036
-----------	-----------



CATEGORY	A	B	C	D
LPV DA	2286-1 250 (300-1)			
LNAV/VNAV DA	2536-1 ¾ 500 (500-1 ¾)			
LNAV MDA	2480-1	444 (500-1)	2480-1 ⅜	444 (500-1 ⅜)
CIRCLING	2560-1 523 (600-1)	2600-1 563 (600-1)	2600-1 ½ 563 (600-1 ½)	2740-2 ¼ 703 (800-2 ¼)