

WAAS CH 42734 W10A	APP CRS 099°	Rwy Idg TDZE 182 Apt Elev 185	5000
--	------------------------	---	-------------

RNAV (GPS) RWY 10

QUITMAN BROOKS COUNTY (4J5)

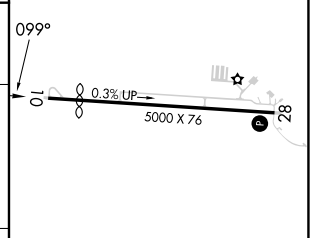
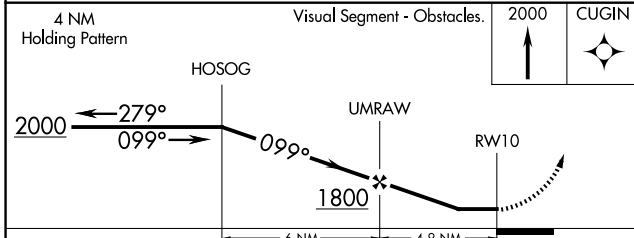
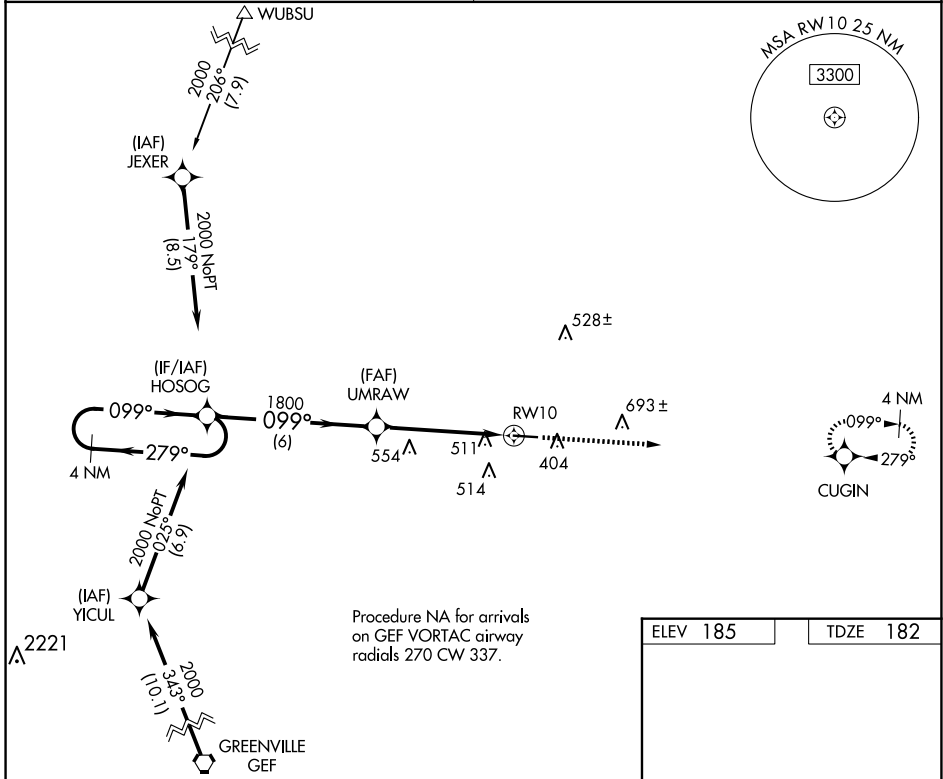
RNP APCH.

Procedure NA at night. Rwy 10 helicopter visibility reduction below 1 SM NA.

NA Use Valdosta altimeter setting; when not received, use Thomasville altimeter setting and increase all MDA 20 feet; increase LP Cat C visibility 1/8 SM.

MISSED APPROACH: Climb to 2000 direct CUGIN and hold.

VALDOSTA APP CON* 126.6	CTAF 122.9
-----------------------------------	----------------------



CATEGORY	A	B	C	D
LP MDA	740-1	558 (600-1)	740-1 5/8 558 (600-1 5/8)	NA
LNAV MDA	820-1	638 (700-1)	820-1 7/8 638 (700-1 7/8)	NA

MIRL Rwy 10-28

SE-4, 20 FEB 2025 to 20 MAR 2025

SE-4, 20 FEB 2025 to 20 MAR 2025