

|  |                        |                         |
|--|------------------------|-------------------------|
| WAAS<br>CH <b>86426</b><br><b>W21A</b> | APP CRS<br><b>214°</b> | Rwy Idg<br><b>5002</b>  |
|  |                        | TDZE<br><b>1348</b>     |
|  |                        | Apt Elev<br><b>1348</b> |

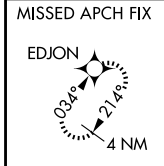
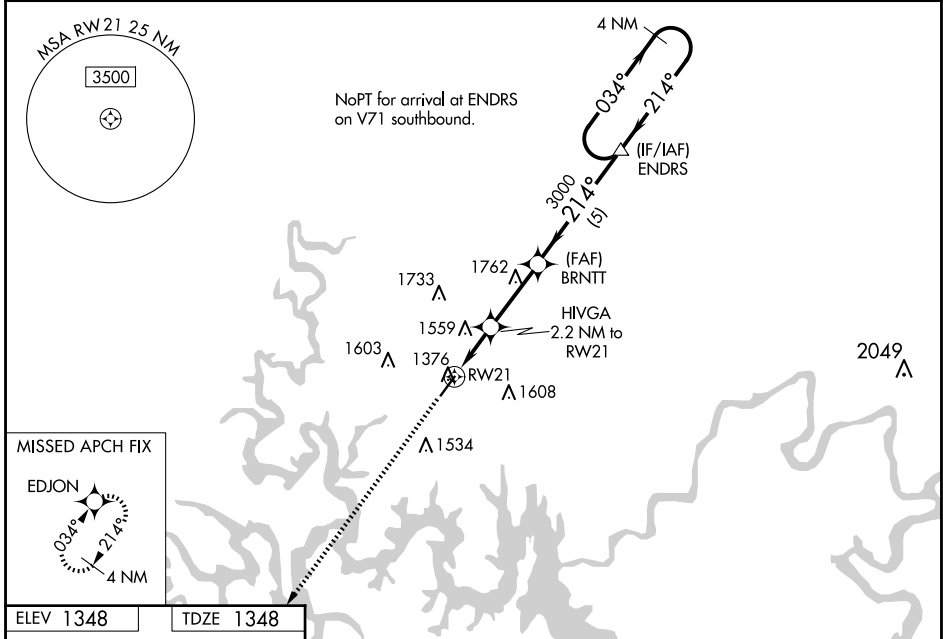
# RNAV (GPS) RWY 21

BRANSON WEST MUNI/EMERSON FLD (F/WB)

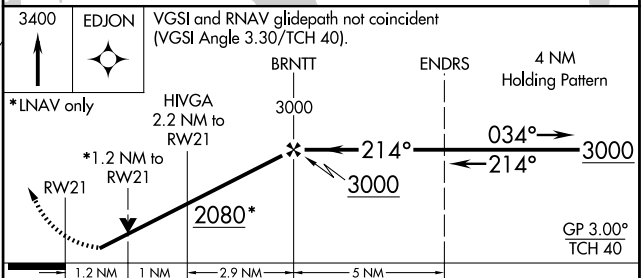
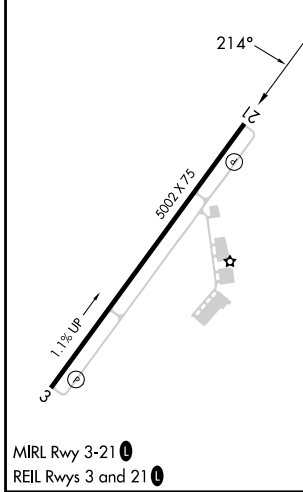
**⚠** DME/DME RNP-0.3 NA. Helicopter visibility reduction below 3/4 SM NA. When local altimeter setting not received, use Branson altimeter setting; increase all DA 39 feet and all MDA 40 feet; increase LPV Cat A/B visibility to 1 mile and LNAV/VNAV Cat A/B visibility to 1 1/4. For uncompensated Baro-VNAV systems, LNAV/VNAV NA below -17°C (2°F) or above 54°C (130°F). VDP and Baro-VNAV NA when using Branson altimeter setting.

**⚠ NA** MISSED APPROACH: Climb to 3400 direct EDJON and hold.

|                            |                                      |                                 |
|----------------------------|--------------------------------------|---------------------------------|
| AWOS-3PT<br><b>119.725</b> | SPRINGFIELD APP CON<br><b>126.35</b> | UNICOM<br><b>123.0 (CTAF) 0</b> |
|----------------------------|--------------------------------------|---------------------------------|



|           |           |
|-----------|-----------|
| ELEV 1348 | TDZE 1348 |
|-----------|-----------|



| CATEGORY     | A          | B               | C | D  |
|--------------|------------|-----------------|---|----|
| LPV DA       | 1598-1     | 250 (300-1)     |   | NA |
| LNAV/VNAV DA | 1832-1 1/2 | 485 (500-1 1/2) |   | NA |
| LNAV MDA     | 1800-1     | 452 (500-1)     |   | NA |
| CIRCLING     | 1900-1     | 552 (600-1)     |   | NA |

NC-3, 20 FEB 2025 to 20 MAR 2025

NC-3, 20 FEB 2025 to 20 MAR 2025