

|  |                        |   |
|--|------------------------|---|
| WAAS<br>CH <b>69537</b><br><b>W34A</b> | APP CRS<br><b>340°</b> | Rwy Idg <b>3500</b><br>TDZE <b>1482</b><br>Apt Elev <b>1482</b> |
|--|------------------------|---|

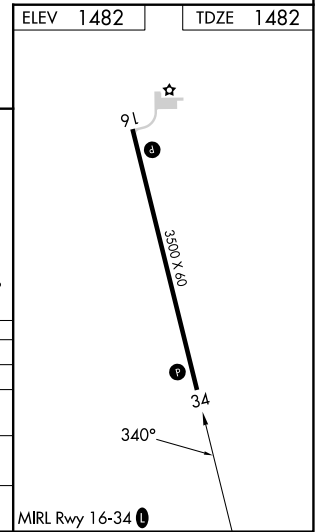
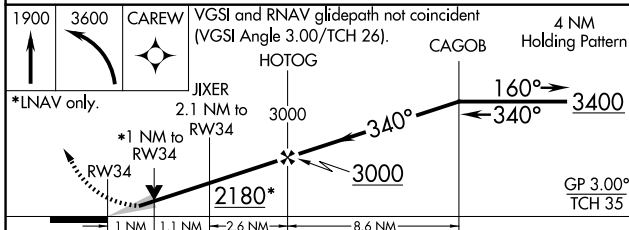
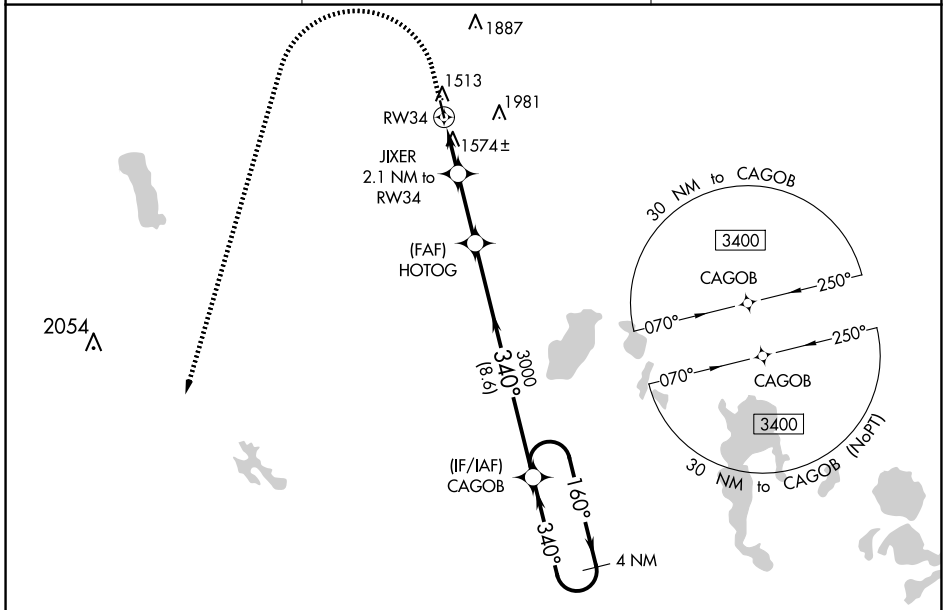
# RNAV (GPS) RWY 34

CANDO MUNI (9D7)

**▽** DME/DME RNP-0.3 NA. When local altimeter not received, use Devils Lake altimeter setting and increase all DA 63 feet and all MDA 80 feet. Increase LPV visibility  $\frac{1}{8}$  mile all Cats and LNAV/VNAV visibility  $\frac{1}{4}$  mile all Cats. Baro-VNAV and VDP NA when using Devils Lake altimeter setting. For uncompensated Baro-VNAV systems, LNAV/VNAV NA below -17°C (0°F) or above 54°C (130°F).

**MISSED APPROACH:**  
Climb to 1900 then climbing left turn to 3600 direct CAREW and hold.

|                          |  |                               |
|--------------------------|--|-------------------------------|
| AWOS-3<br><b>118.325</b> | MINNEAPOLIS CENTER<br><b>124.2 270.3</b> | CTAF<br><b>122.9</b> <b>0</b> |
|--------------------------|--|-------------------------------|



| CATEGORY          | A                     | B                          | C | D  |
|-------------------|-----------------------|----------------------------|---|----|
| LPV DA            | 1732-1                | 250 (300-1)                |   | NA |
| LNAV/VNAV DA      | 1871-1 $\frac{3}{8}$  | 389 (400-1 $\frac{3}{8}$ ) |   | NA |
| LNAV MDA          | 1840-1                | 358 (400-1)                |   | NA |
| <b>C</b> CIRCLING | 1900-1<br>418 (500-1) | 1940-1<br>458 (500-1)      |   | NA |

NC-1, 20 FEB 2025 to 20 MAR 2025

NC-1, 20 FEB 2025 to 20 MAR 2025