

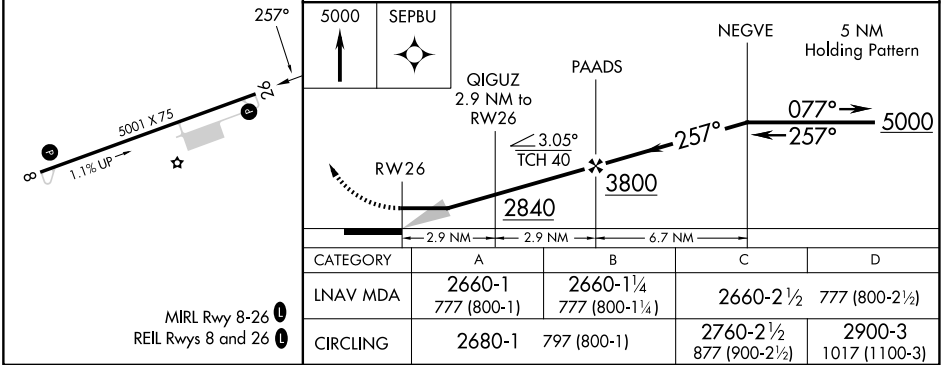
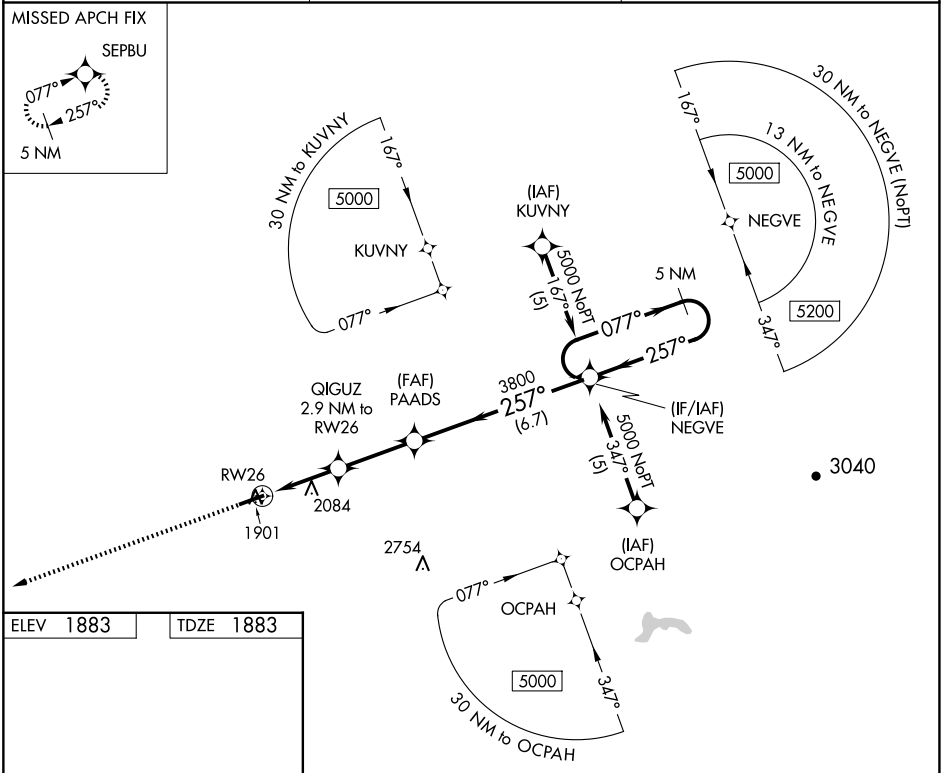
APP CRS 257°	Rwy Idg 5001
	TDZE 1883
	Apt Elev 1883

RNAV (GPS) RWY 26

SOUTHERN WEST VIRGINIA RGNL (E,B,D)

RNP APCH - GPS.	MISSED APPROACH: Climb to 5000 direct SEPBU and hold.
<p>▼ Obtain local altimeter setting on CTAF; when not received, use Beckley altimeter setting: increase all MDAs 140 feet and visibility LNAV Cat A and Circling Cat A/B ¼ SM and Circling Cat C ½ SM.</p>	

116 AWOS-3 120.625	INDIANAPOLIS CENTER 126.575 257.85	UNICOM 122.8 (CTAF) 0
------------------------------	--	---------------------------------



NE-4, 20 FEB 2025 to 20 MAR 2025

NE-4, 20 FEB 2025 to 20 MAR 2025