

APP CRS	Rwy Idg	N/A
214°	TDZE	N/A
	Apt Elev	526

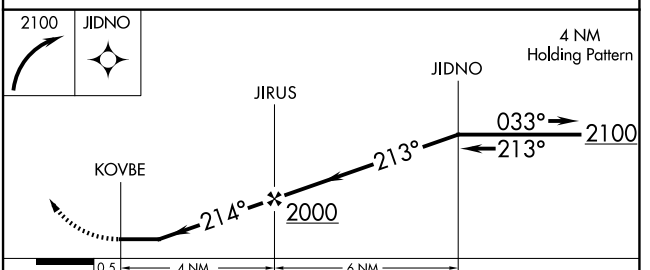
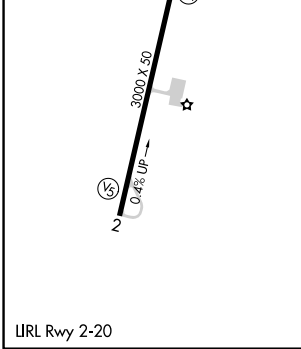
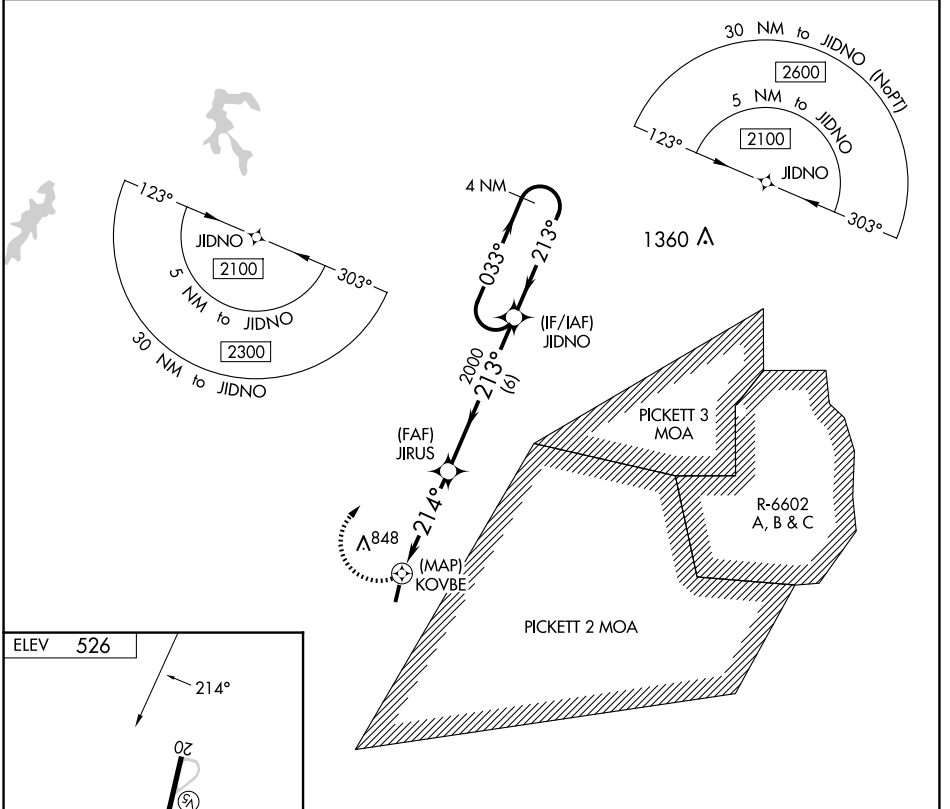
RNAV (GPS)-B

LUNENBURG COUNTY (W31)

⚠ Helicopter visibility reduction below 1 SM NA. DME/DME RNP-0.3 NA. Procedure NA at night. When local altimeter setting not received, use Blackstone altimeter setting and increase all MDA 60 feet.

MISSED APPROACH: Climbing right turn to 2100 direct JIDNO and hold.

AWOS-3 123.875	WASHINGTON CENTER 118.75 377.1	UNICOM 122.7 (CTAF)
--------------------------	--	-------------------------------



CATEGORY	A	B	C	D
C CIRCLING	1540-3	1014 (1100-3)	NA	

NE-3, 20 FEB 2025 to 20 MAR 2025

NE-3, 20 FEB 2025 to 20 MAR 2025