

APP CRS	Rwy Idg	N/A
150°	TDZE	N/A
	Apt Elev	422

RNAV (GPS)-A

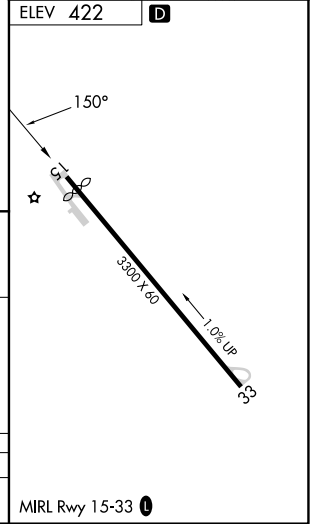
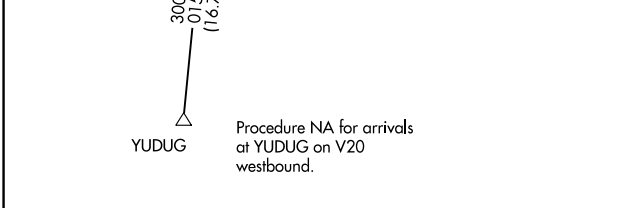
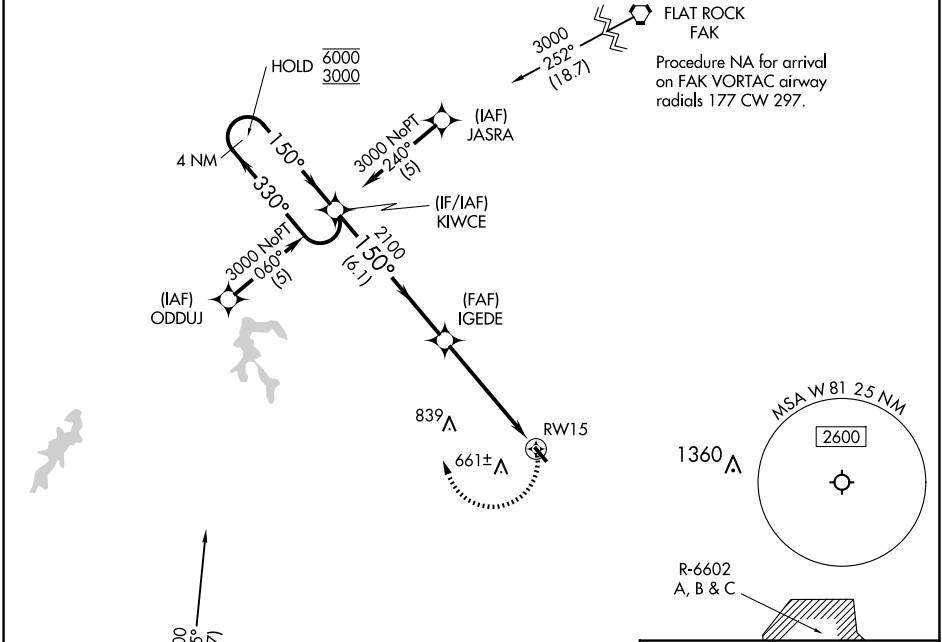
CREWE MUNI (W81)

RNP APCH - GPS.

Procedure NA at night.
Rwy 15 helicopter visibility reduction below 1 SM NA.

MISSED APPROACH: Climbing right turn to 3000 direct KIWCCE and hold.

AWOS-3 119.05	WASHINGTON CENTER 118.75 377.1	UNICOM 122.8 (CTAF) 1
-------------------------	--	---------------------------------



CATEGORY	A	B	C	D
CIRCLING	1420-3	998 (1000-3)	NA	NA

NE-3, 20 FEB 2025 to 20 MAR 2025

NE-3, 20 FEB 2025 to 20 MAR 2025