

APP CRS	Rwy Idg	3851
021°	TDZE	2183
	Apt Elev	2183

RNAV (GPS) RWY 2

WILBUR (2S8)

RNP APCH - GPS.

▼ Circling Rwy 20 NA at night. When local altimeter setting not received, use EPH altimeter setting and increase all MDAs 240 feet and LNAV visibility Cat C/D 5/8 SM, and Circling visibility Cat B/C/D 3/4 SM. VDP NA with EPH altimeter setting.

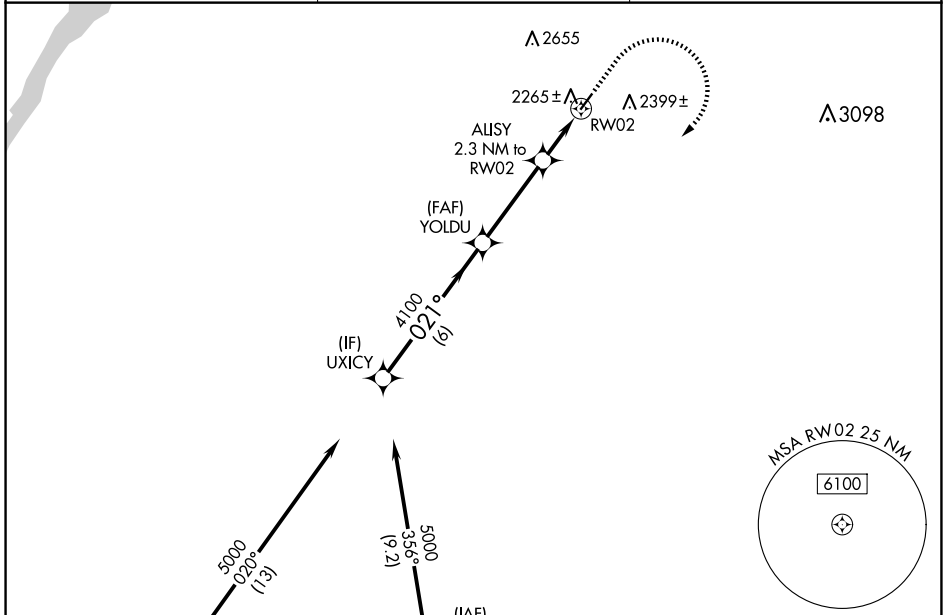
▲ NA

MISSED APPROACH: Climb to 2600, then climbing right turn to 5000 direct WIPES and hold.

AWOS-2
124.175

GRANT COUNTY APP CON *
126.4 379.95

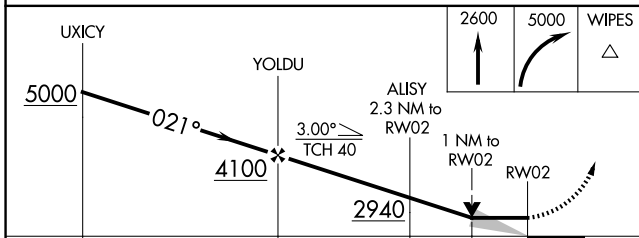
CTAF
122.9 0



NW-1, 20 FEB 2025 to 20 MAR 2025

NW-1, 20 FEB 2025 to 20 MAR 2025

ELEV 2183	TDZE 2183
-----------	-----------



CATEGORY	A	B	C	D
LNAV MDA	2520-1 337 (400-1)			
CIRCLING	2660-1 477 (500-1)	2760-1 577 (600-1)	2960-2¼ 777 (800-2¼)	2960-2½ 777 (800-2½)

