

WAAS CH 65742 W10A	APP CRS 124°	Rwy Idg TDZE Apt Elev	5728 5932 5933
----------------------------------------	------------------------	-----------------------------	-------------------------------------------

RNAV (GPS) RWY 10

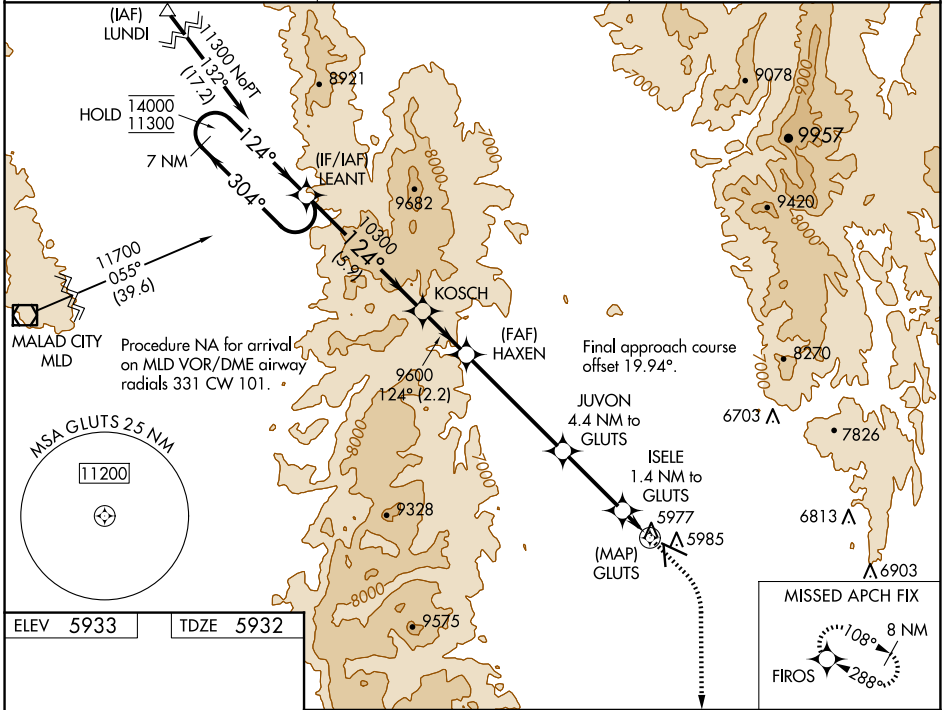
BEAR LAKE COUNTY (1U7)

RNP APCH - GPS.

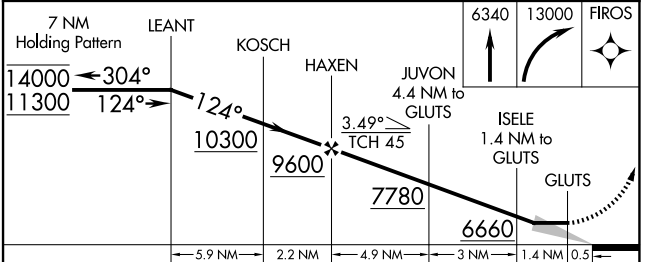
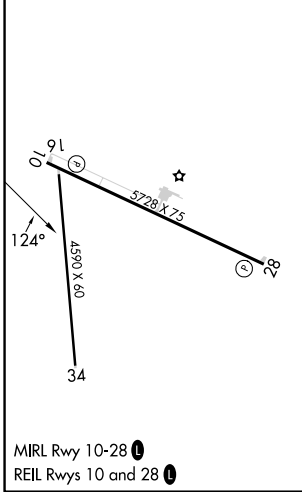
MISSED APPROACH: (Do not exceed 185K until FIROs)
Climb to 6340 then climbing right turn to 13000 direct FIROs and hold, continue climb-in-hold to 13000.

-23°C

AWOS-3 118.525	SALT LAKE CENTER 128.35 239.25	UNICOM 122.8 (CTAF)
--------------------------	------------------------------------------	-------------------------------



ELEV 5933	TDZE 5932
-----------	-----------



CATEGORY	A	B	C	D
LP MDA	6240-1 308 (400-1)			
LNAV MDA	6240-1 308 (400-1)			
C CIRCLING	6320-1 387 (400-1)	6440-1 507 (600-1)	6720-2¼ 787 (800-2¼)	7140-3 1207 (1300-3)

NW-1, 20 FEB 2025 to 20 MAR 2025

NW-1, 20 FEB 2025 to 20 MAR 2025