

WAAS CH 62842 W28A	APP CRS 284°	Rwy Idg 5728 TDZE 5933 Apt Elev 5933
--	------------------------	---

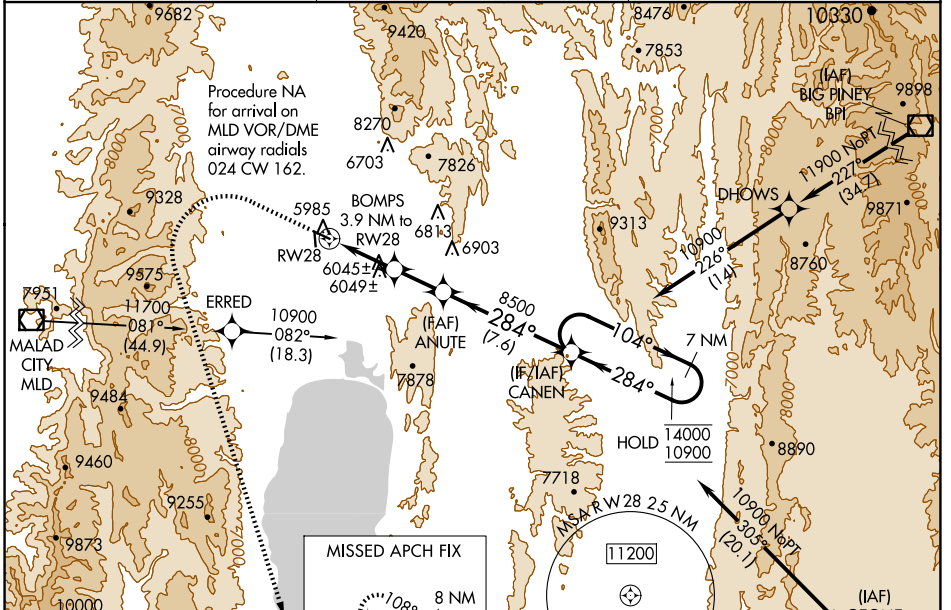
RNAV (GPS) RWY 28

BEAR LAKE COUNTY (1U7)

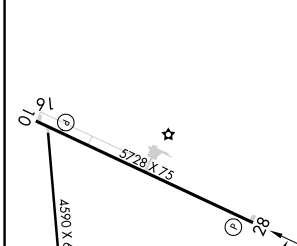
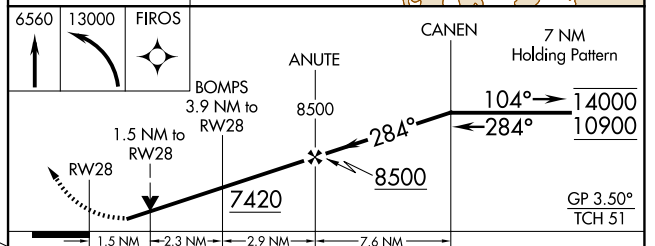
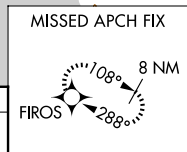
RNP APCH - GPS.
 For uncompensated Baro-VNAV systems, LNAV/VNAV NA below -26°C or above 35°C.

MISSED APPROACH: (Do not exceed 185K until FIROs)
 Climb to 6560 then climbing left turn to 13000 direct FIROs and hold.

AWOS-3 118.525	SALT LAKE CENTER 128.35 239.25	UNICOM 122.8 (CTAF)
--------------------------	--	-------------------------------



ELEV 5933	TDZE 5933
-----------	-----------



CATEGORY	A	B	C	D
LPV DA	6305-1 372 (400-1)			
LNAV/VNAV DA	6366-1¼ 433 (500-1¼)			
LNAV MDA	6560-1 627 (700-1)	6560-1¾ 627 (700-1¾)		
CIRCLING	6560-1 627 (700-1)	6720-2¼ 787 (800-2¼)	7140-3 1207 (1300-3)	

PARIS, IDAHO
 Amdt 1 13JUN24

42°15'N-111°20'W

RNAV (GPS) RWY 28

BEAR LAKE COUNTY (1U7)

NW-1, 20 FEB 2025 to 20 MAR 2025

NW-1, 20 FEB 2025 to 20 MAR 2025