

(HIVKA2.HIVKA) 18312

# HIVKA TWO DEPARTURE (RNAV)

AL-10546 (FAA)

ST GEORGE RGNL (SGT)  
ST GEORGE, UTAH

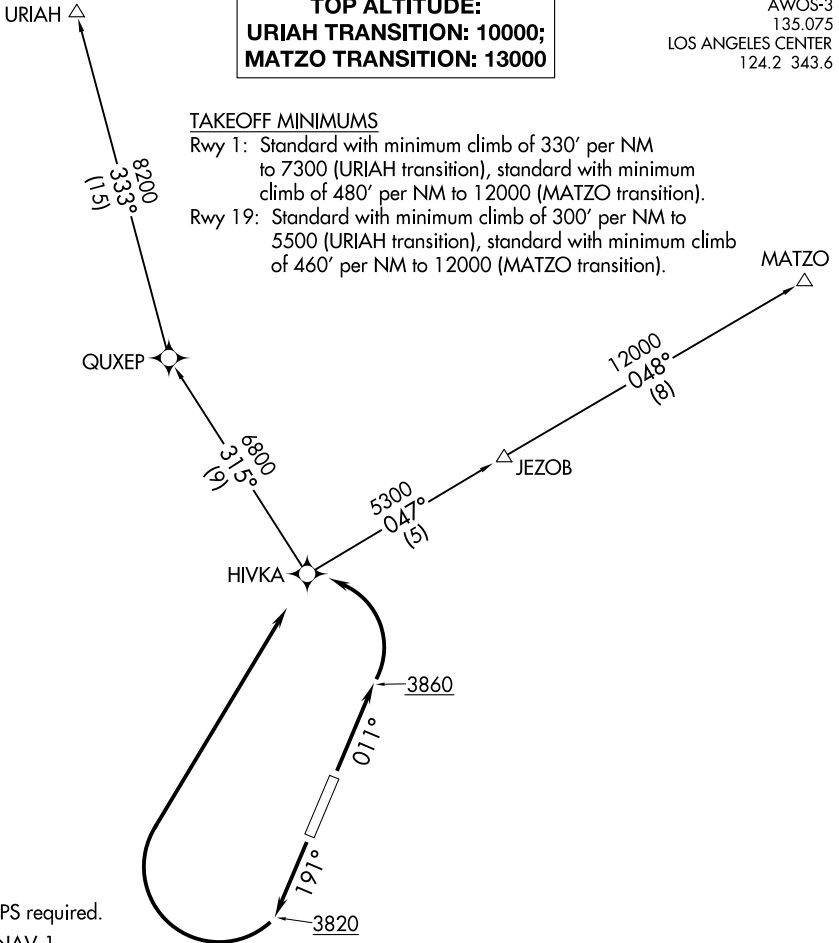
AWOS-3  
135.075  
LOS ANGELES CENTER  
124.2 343.6

**TOP ALTITUDE:**  
**URIAH TRANSITION: 10000;**  
**MATZO TRANSITION: 13000**

### TAKEOFF MINIMUMS

Rwy 1: Standard with minimum climb of 330' per NM to 7300 (URIAH transition), standard with minimum climb of 480' per NM to 12000 (MATZO transition).

Rwy 19: Standard with minimum climb of 300' per NM to 5500 (URIAH transition), standard with minimum climb of 460' per NM to 12000 (MATZO transition).



NOTE: GPS required.  
NOTE: RNAV-1.  
NOTE: Chart not to scale.

### DEPARTURE ROUTE DESCRIPTION

TAKEOFF RUNWAY 1: Climb heading 011° to 3860, then climbing left turn direct HIVKA, thence. . . .

TAKEOFF RUNWAY 19: Climb heading 191° to 3820, then climbing right turn direct HIVKA, thence. . . .

. . . .(transition).

MATZO TRANSITION (HIVKA2.MATZO)

URIAH TRANSITION (HIVKA2.URIAH)

HIVKA TWO DEPARTURE (RNAV)  
(HIVKA2.HIVKA) 31MAR16

ST GEORGE, UTAH  
ST GEORGE RGNL (SGT)

SW-4, 20 FEB 2025 to 20 MAR 2025

SW-4, 20 FEB 2025 to 20 MAR 2025