

WAAS CH <b>50220</b> <b>W01A</b>	APP CRS <b>008°</b>	Rwy Idg TDZE Apt Elev	<b>9300</b> <b>2851</b> <b>2884</b>
--	------------------------	-----------------------------	---

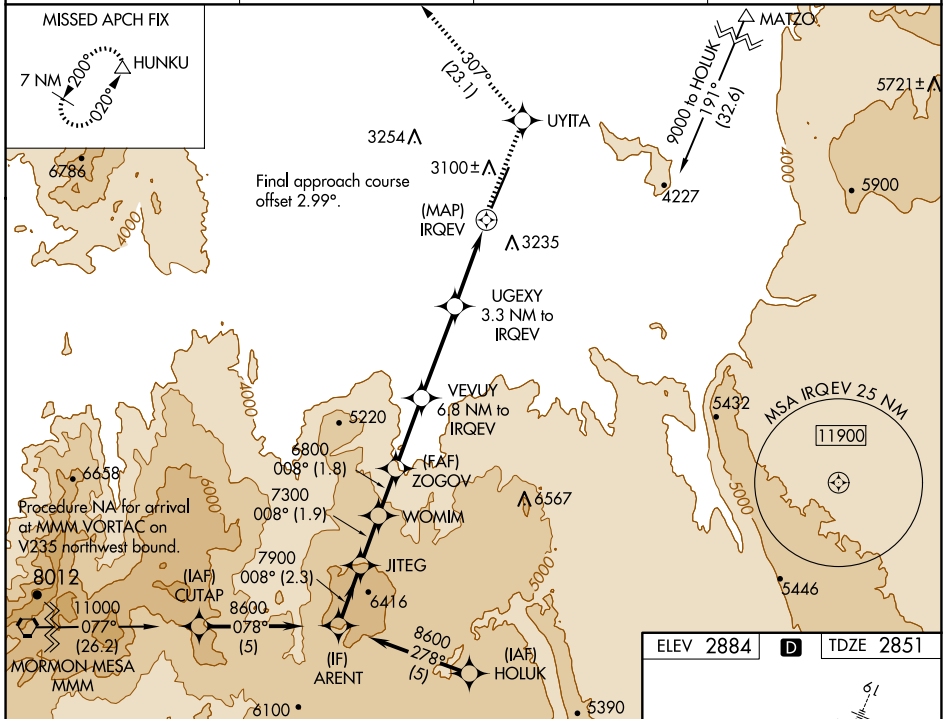
# RNAV (GPS) RWY 1

ST GEORGE RGNL (SGU)

RNP APCH-GPS.  
 ▼ Helicopter visibility reduction below 1 SM NA.  
 ▲ # Missed approach requires a minimum climb of 225 feet per NM to 6800.  
 ☒ -6°C † Missed approach requires a minimum climb of 220 feet per NM to 6700.

MISSED APPROACH: Climb to 9800 direct UYITA and on track 307° to HUNKU and hold, continue climb-in-hold to 9800.

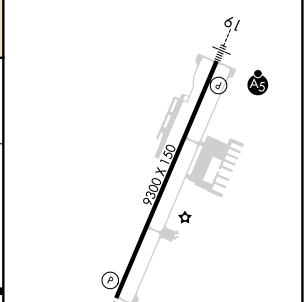
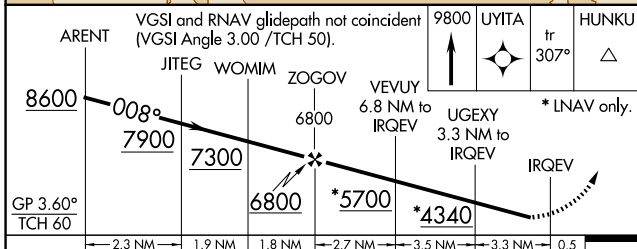
AWOS-3PT <b>135.075</b>	LOS ANGELES CENTER <b>124.2 343.6</b>	CLNC DEL <b>133.3</b>	UNICOM <b>123.075</b> (CTAF) <b>0</b>
----------------------------	--	--------------------------	--



SW-4, 20 FEB 2025 to 20 MAR 2025

SW-4, 20 FEB 2025 to 20 MAR 2025

ELEV 2884	<b>D</b>	TDZE 2851
-----------	----------	-----------



CATEGORY	A	B	C	D
LPV DA#	3170-1 319 (300-1)			NA
LNAV MDA †	3340-1	489 (500-1)	3340-1 3/8 489 (500-1 3/8)	NA
LNAV MDA	3760-1 1/4	909 (900-1 1/4)	3760-2 1/2 909 (900-2 1/2)	NA
CIRCLING	3760-1 1/4 876 (900-1 1/4)	3800-1 1/4 916 (1000-1 1/4)	3860-3 976 (1000-3)	NA

