

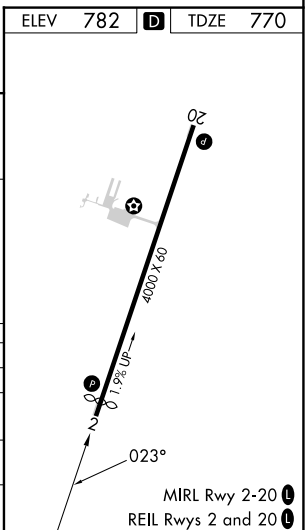
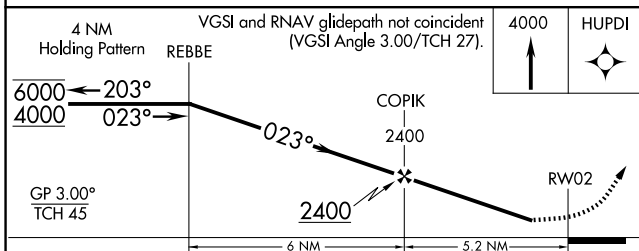
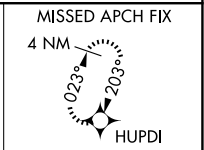
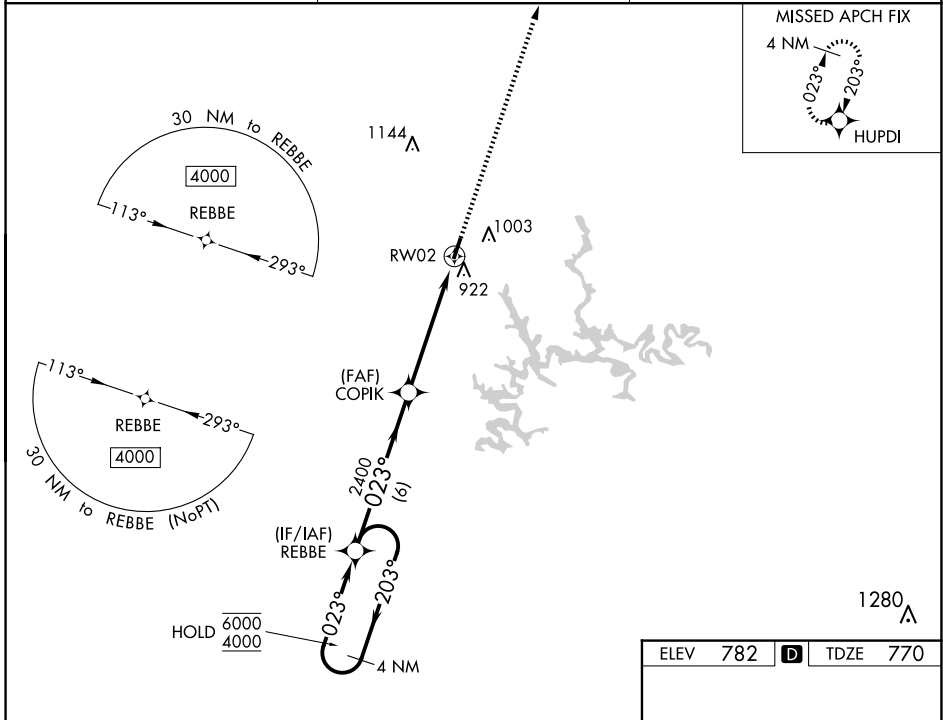
WAAS CH <b>69542</b> <b>W02A</b>	APP CRS <b>023°</b>	Rwy Idg <b>3800</b> TDZE <b>770</b> Apt Elev <b>782</b>
--	------------------------	---

# RNAV (GPS) RWY 2

LEITCHFIELD-GRAYSON COUNTY (M20)

RNP APCH.	<p>⚠ Circling Rwy 20 NA at night. Rwy 2 helicopter visibility reduction below 3/4 SM NA. Baro-VNAV NA. Use Elizabethtown altimeter setting.</p>	<p>MISSED APPROACH: Climb to 4000 direct HUPDI and hold, continue climb-in-hold to 4000.</p>
-----------	---	--

EKX AWOS-3 <b>121.025</b>	INDIANAPOLIS CENTER <b>121.175 353.65</b>	UNICOM <b>123.0 (CTAF) 0</b>
------------------------------	--	---------------------------------



CATEGORY	A	B	C	D
LPV DA	1140-1	370 (400-1)		NA
LNAV/VNAV DA	1308-1½	538 (600-1½)		NA
LNAV MDA	1240-1	470 (500-1)	1240-1⅜ 470 (500-1⅜)	NA
CIRCLING	1380-1	598 (600-1)	1380-1½ 598 (600-1½)	NA

SE-1, 20 FEB 2025 to 20 MAR 2025

SE-1, 20 FEB 2025 to 20 MAR 2025