

WAAS CH <b>72942</b> <b>W20A</b>	APP CRS <b>203°</b>	Rwy Idg <b>4000</b> TDZE <b>782</b> Apt Elev <b>782</b>
--	------------------------	---

# RNAV (GPS) RWY 20

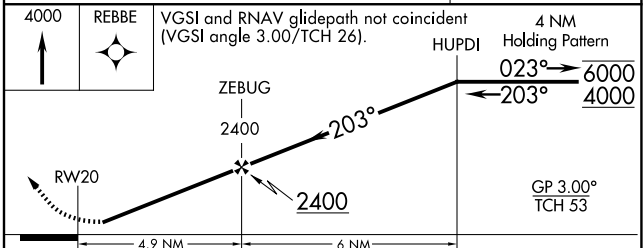
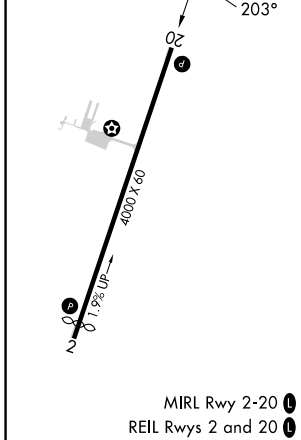
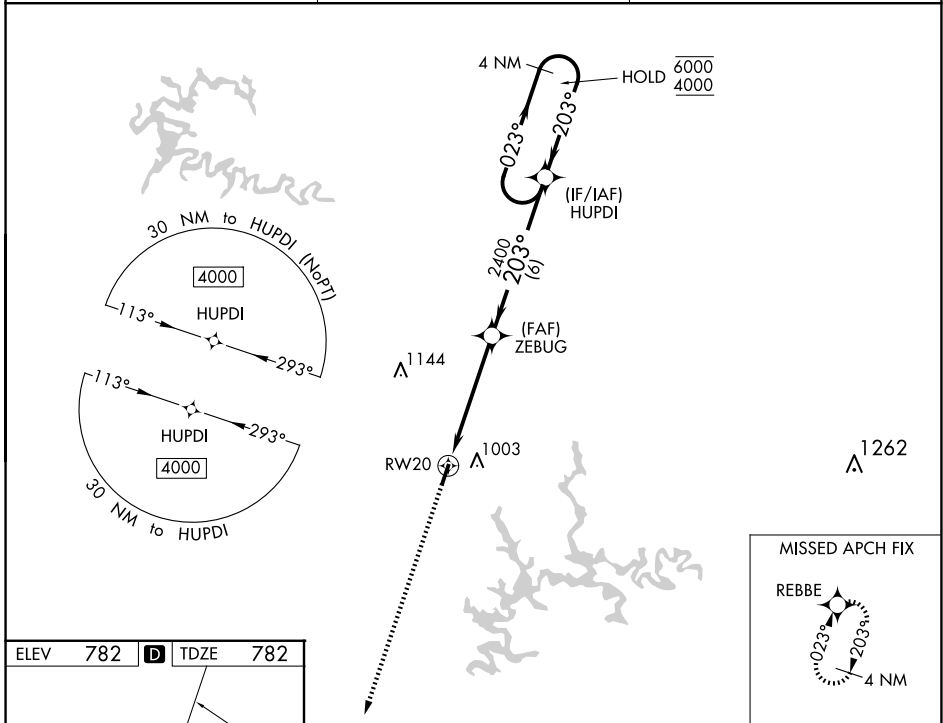
LEITCHFIELD-GRAYSON COUNTY (M20)

RNP APCH.

▼ Rwy 20 helicopter visibility reduction below 1 SM NA.  
 ▲NA Baro-VNAV NA. Use Elizabethtown altimeter setting.  
 Straight-in Rwy 20 NA at night, Circling Rwy 20 NA at night.

MISSED APPROACH: Climb to 4000 direct REBBE and hold, continue climb-in-hold to 4000.

EKX AWOS-3 <b>121.025</b>	INDIANIAPOLIS CENTER <b>121.175 353.65</b>	UNICOM <b>123.0 (CTAF) 1</b>
------------------------------	---	---------------------------------



CATEGORY	A	B	C	D
LPV DA	1088-1		306 (400-1)	NA
LNAV/VNAV DA	1145-1		363 (400-1)	NA
LNAV MDA	1320-1	538 (600-1)	1320-1½ 538 (600-1½)	NA
<b>C</b> CIRCLING	1380-1	598 (600-1)	1380-1½ 598 (600-1½)	NA

SE-1, 20 FEB 2025 to 20 MAR 2025

SE-1, 20 FEB 2025 to 20 MAR 2025