

APP CRS Rwy Idg **2004**
 TDZE **1436**
 Apt Elev **1436**

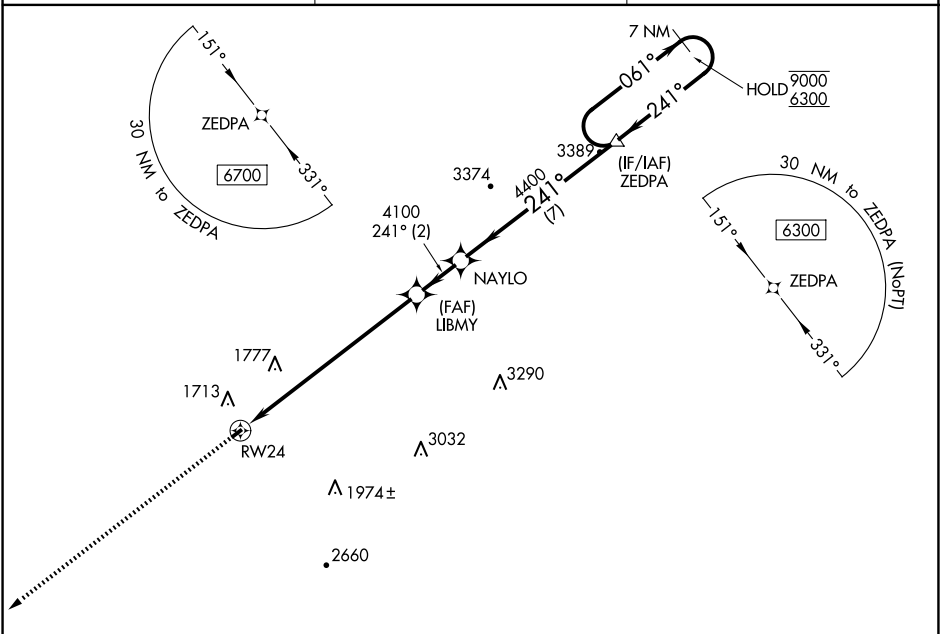
RNAV (GPS) RWY 24

EAGLE'S NEST (W13)

RNP APCH.
 Procedure NA at night. Rwy 24 helicopter visibility reduction below 1 SM NA.

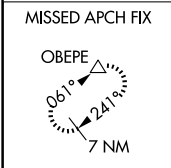
MISSED APPROACH: Climb to 6700 direct OBEPE and hold, continue climb-in-hold to 6700.

| | | |
|----------------------------|--|--------------------------------|
| AWOS-3PT 118.625 | POTOMAC APP CON 132.85 323.125 | UNICOM 123.05 (CTAF) |
|----------------------------|--|--------------------------------|

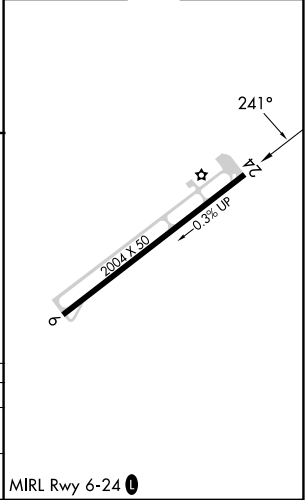
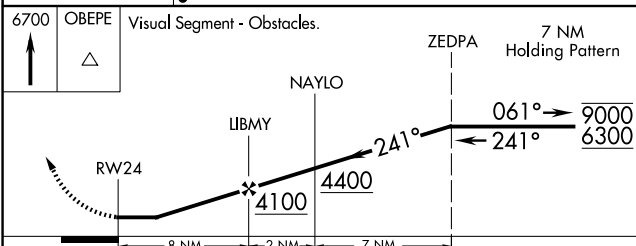


NE-3, 20 FEB 2025 to 20 MAR 2025

NE-3, 20 FEB 2025 to 20 MAR 2025



| | |
|-----------|-----------|
| ELEV 1436 | TDZE 1436 |
|-----------|-----------|



| CATEGORY | A | B | C | D |
|-----------|--------|---------------|----|---|
| LNNAV MDA | 2640-3 | 1204 (1300-3) | NA | |
| CIRCLING | 2640-3 | 1204 (1300-3) | NA | |

MIRL Rwy 6-24