

RNAV GPS RWY 36

APCH CRS	Rwy ldg	3418
010°	TDZE	382
	Arpt Elev	387

[USA] BRYANT AAF (FORT RICHARDSON) (FRN) (PAFR)

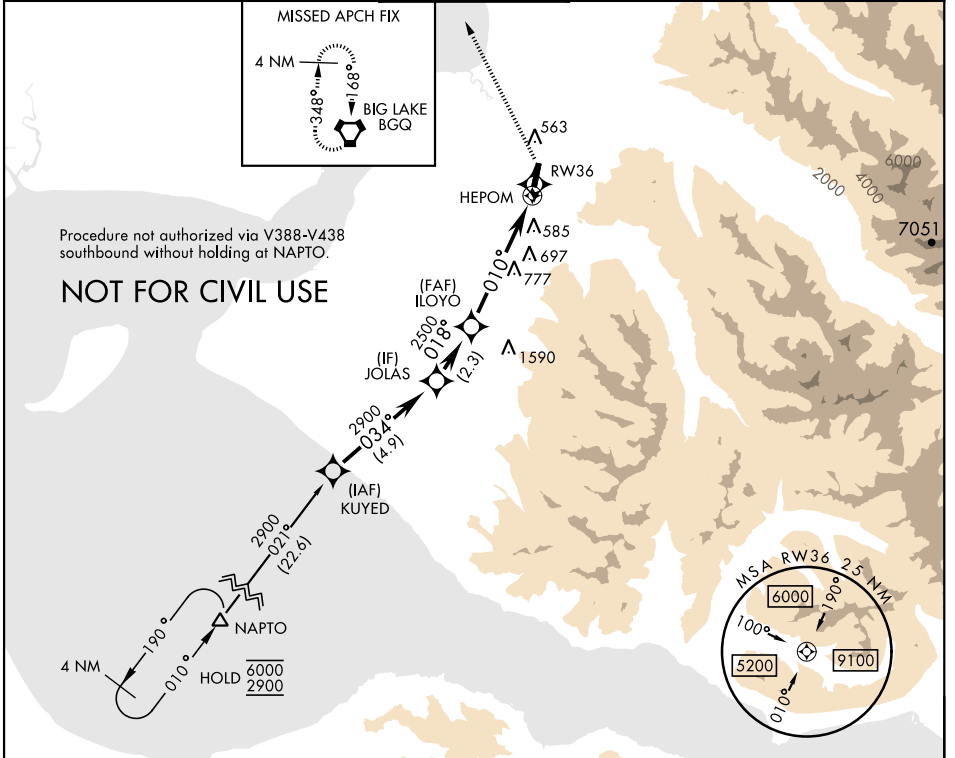
RNP APCH - GPS

▼ Rwy 36 helicopter visibility reduction below 3/4 mile not authorized.

* Circling not authorized E of Rwy 18-36.

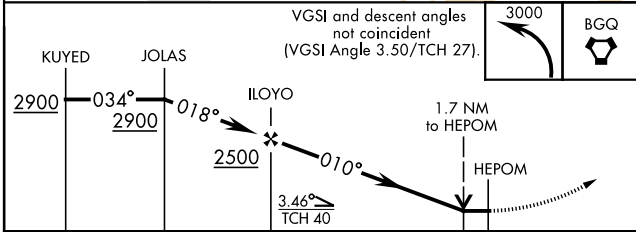
MISSED APPROACH: Climbing left turn to 3000 proceed direct BGQ VORTAC and hold.

AWOS-3	ANCHORAGE APP CON	TOWER ★	GND CON	CLNC DEL
134.25	118.6 290.5	125.0 (CTAF) 0254.35	121.25 239.25	119.1 363.2



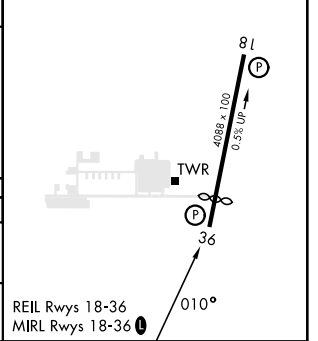
AK, 20 FEB 2025 to 17 APR 2025

AK, 20 FEB 2025 to 17 APR 2025



ELEV	387	TDZE	382
------	-----	------	-----

Rwy 36 ldg 3418'



CATEGORY	A	B	C	D
LNVA MDA	1220-1 838 (900-1)	1220-1¼ 838 (900-1¼)	1220-2½ 838 (900-2½)	
CIRCLING *	1220-1¼ 833 (900-1¼)		1220-2½ 833 (900-2½)	1620-3 1233 (1300-3)

FORT RICHARDSON (ANCHORAGE), ALASKA 61° 16'N - 149° 39'E BRYANT AAF (FORT RICHARDSON) (FRN) (PAFR)

Orig 31OCT24

RNAV GPS RWY 36